

Central
Coast
Council

Central Coast
Regional Sporting and
Recreation Complex

Prospectus

2026 | 2027



Index

From the CEO.....	3
From the Mayor	3
Where is the Central Coast Regional Sporting & Recreation Complex?	4
Interesting facts about the Central Coast	8
People of the Central Coast	9
Illustrative site plan of the complex.....	10
Technical specifications	12
Event guidelines.....	14
Amenities	15
Sports and event equipment	17
Funding.....	18
Testimonials.....	19
Contacts.....	20



From the CEO

The Central Coast Regional Sporting and Recreation Complex (CCRSRC) in Tuggerah has firmly established itself as a premier multi-use facility, attracting a diverse range of high-calibre mass participation events from across Australia and internationally.

In the 2024–25 financial year alone, the venue welcomed 119,816 visitors, bringing total attendance to over 523,000 since opening in 2019—despite interruptions caused by COVID lockdowns. This growth highlights the complex’s reputation as a destination of choice for athletes, spectators and event organisers alike.

What sets the CCRSRC apart is its adaptability. The accessible facility caters to a wide variety of sports at both community and representative levels, including cricket, Oztag, rugby league, rugby union, soccer, touch football, AFL and cross country. To preserve pitch quality, field use is capped and rotated monthly, supported by expert maintenance and upgrades.

Beyond sport, the CCRSRC is designed to host recreational and social events such as markets, expos, festivals, school carnivals and community activations. Its convenient location—just off the M1, midway between Sydney and Newcastle— is within easy reach of a range of accommodation options, and the attractions and natural beauty of the Central Coast.

With its ideal location, coastal lifestyle and high-quality facilities, the CCRSRC has established itself as a venue of choice for visiting teams to set up base training camps for extended periods during major tournaments held in New South Wales.

We invite anyone interested in hosting sporting, leisure or recreational events to contact our Management Team—details are available on the back of this prospectus.

David Farmer

Chief Executive Officer
Central Coast Council



From the Mayor

Access to sport, recreation, and leisure facilities remains a key priority for Council as outlined in the Community Strategic Plan (CSP).

Designed as a premier multi-use venue for mass participation, the Central Coast Regional Sporting and Recreation Complex (CCRSRC) continues to deliver on its promise by hosting a diverse range of sporting, recreational and cultural events at a local, state, national and international level.

Some highlights include:

- Training base camp for the German Women’s football team for the FIFA Women’s World Cup Australia and New Zealand 2023 ©, with praise by FIFA and German officials for its world-class pitch and support from Council staff.
- NSW Aboriginal Rugby League Knockout attracted tens of thousands in 2019 and 2023, demonstrating the facility’s capacity to host large-scale events with ease.
- Darkinjung Community NAIDOC Day – a vibrant celebration of culture attracted over 3,200 attendees.
- NSW Ultimate Flying Disc made its debut as a new sport, and following its success is returning for State Championships.
- The Final Whistle (TFW) annual 9s Rugby League tournament, hosted at the venue for several years, has grown to attract 34,500 attendees over 8 days with an even bigger event planned for 2026.
- Providing year-round early field access for multiple local sport associations to allow for pre-season grading and trials.

The benefit of this outstanding community facility for our region cannot be understated. The CCRSRC has provided an estimated \$60 million in regional economic contribution since its opening in 2019, driving valuable flow-on effects to small business, employment and community health and well-being.

Council is dedicated to attracting future events through competitive tendering, so everyone can enjoy the unique beauty of the Central Coast. To learn more contact our Management Team—details can be found on the back of this prospectus

Lawrie McKinna

Mayor
Central Coast Council

Where is the Central Coast Regional Sporting & Recreation Complex?

The Central Coast region of New South Wales is known for its magnificent national parks, extensive waterways and golden sandy beaches. Tuggerah sits alongside one of three major interconnected coastal lagoons, Tuggerah Lakes.

The Regional Complex is very accessible not only by car but by train as well, being only 400m from Tuggerah Station.

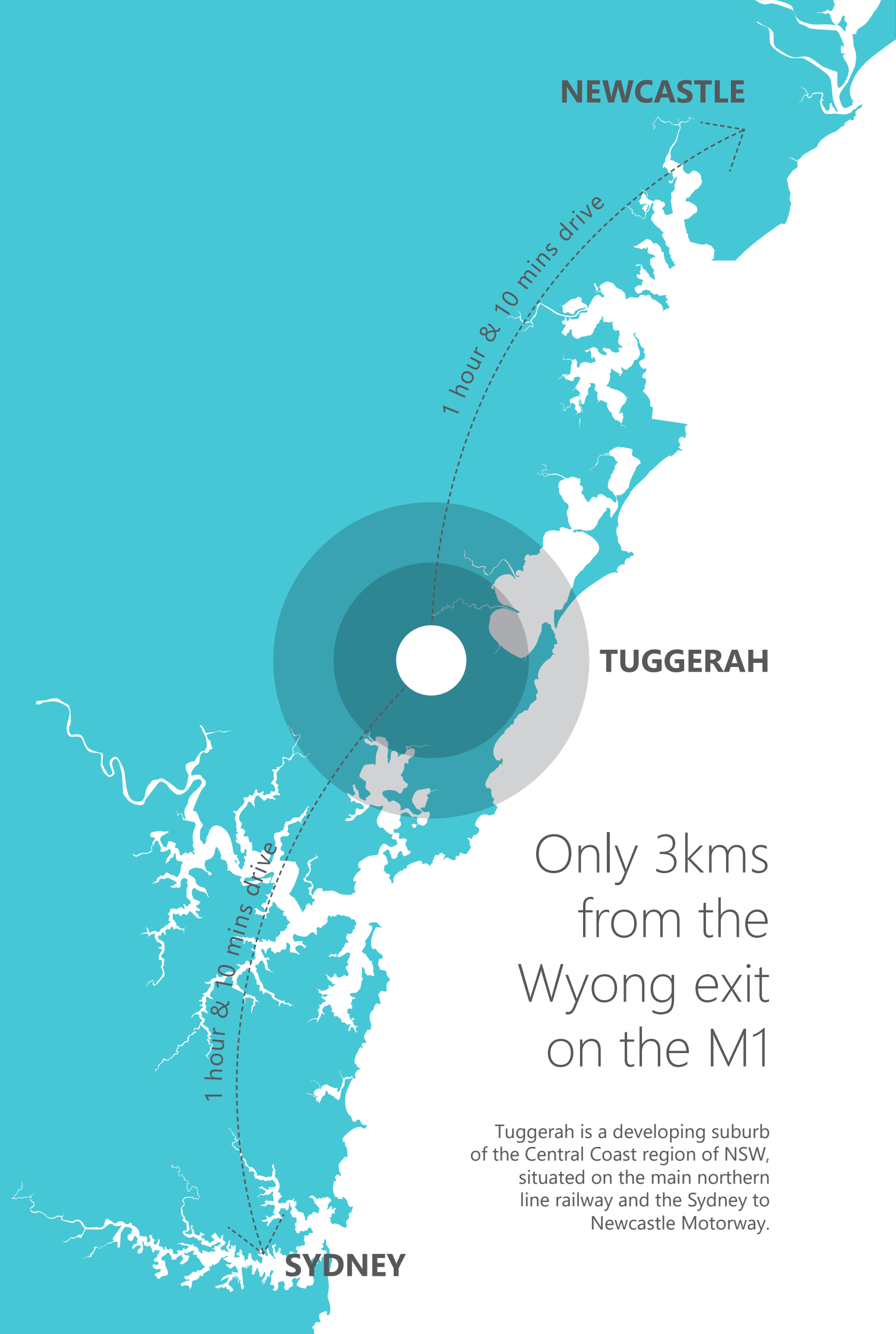
The complex has 448 parking bays on site, including 24 accessible parking bays. Additional parking is also available within walking distance from the complex with close proximity to the train station as well as major shopping centres within the precinct.

The Entrance

EDSACC

Mingara

Central Coast Regional Sporting & Recreation Complex



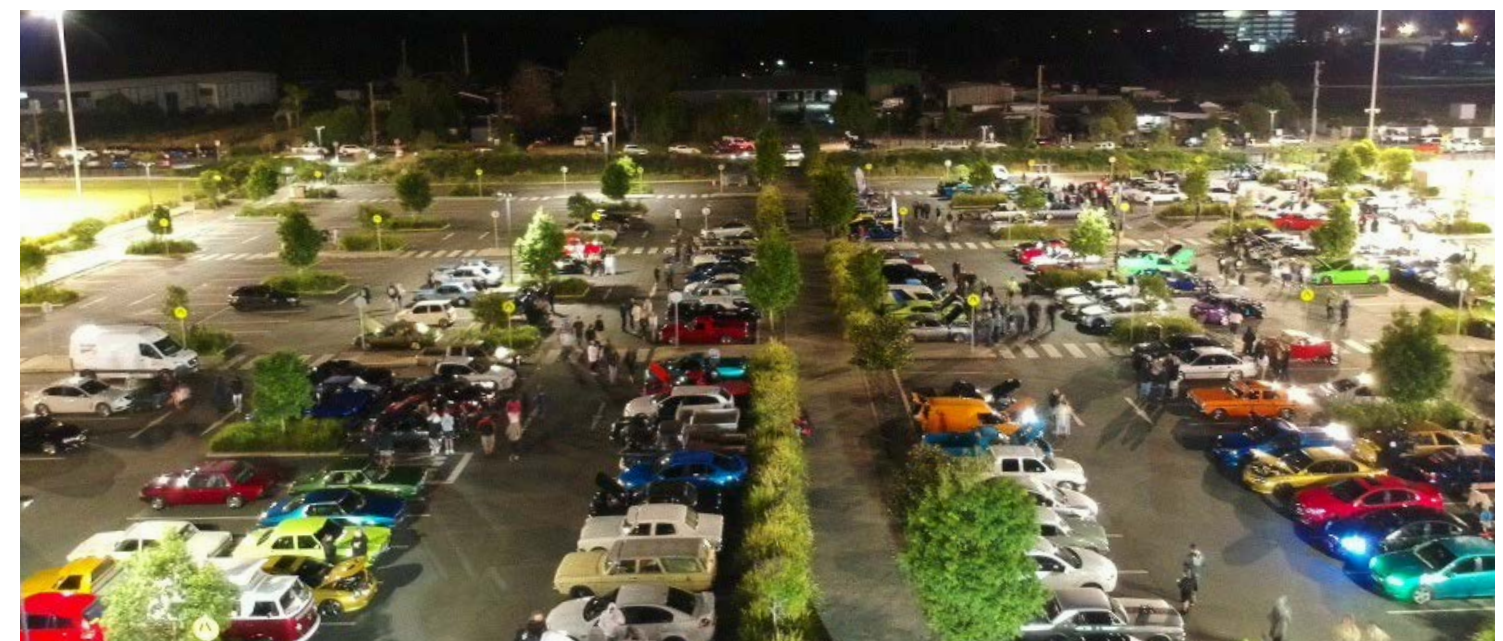
NEWCASTLE

TUGGERAH

Only 3kms
from the
Wyong exit
on the M1

Tuggerah is a developing suburb
of the Central Coast region of NSW,
situated on the main northern
line railway and the Sydney to
Newcastle Motorway.

SYDNEY



Interesting facts about the Central Coast

The Central Coast is a beautiful, thriving and vibrant area with an array of coastal waterways and bushland, as well as a diverse range of restaurants and eateries, with everything at your fingertips.

Weather

- Weather is humid subtropical: hot and humid summers and mild to chilly winters.
- Average 22 degrees in Summer and 15 degrees in Winter.
- Rainfall is spread fairly evenly throughout the year, but is slightly less frequent in Winter and Autumn.
- Average annual rainfall ranges from 1200–1600mm near the coast to between 800–1200mm further inland.

Main attractions

- Beaches and coastline
- Bushland, walking tracks and lookouts
- Soft adventure activities
- Laid back lifestyle
- Friendly community

Population and Growth Projections

- Approximately 7% of residents live with a disability on the Central Coast.
- The population of the Central Coast is expected to grow by 64,124 people (18.41%) between 2021 and 2046 (+64,124 people, 18.41% growth).

Cultural Diversity

- 17,047 people living on the Central Coast identify as Aboriginal and/or Torres Strait Islander. This represents 4.9% of the local LGA population, which is higher than the NSW average of 3.4%.
- 16% of residents were born overseas.
- 7% of the Central Coast population speak a language other than English at home.

Tourism and Visitor Economy

The Central Coast has a vibrant visitor economy, attracting approximately 5.6 million visitors in 2024.

- Tourism expenditure: \$1.3 billion visitor spend.
- The Central Coast ranks 6th in Regional NSW for domestic overnight visitation and 4th for day trip visitation.
- Average length of stay is 2.6 nights for domestic visitors and 16.2 nights for international visitors.

Active Lifestyle and Recreation

The Central Coast offers a diverse range of facilities and outdoor spaces that support a healthy and activity lifestyle:

- 77 sporting facilities catering for both winter and summer sports.
- 27 skate parks and 4 BMX tracks, designed for a variety of skill levels.
- 41 beaches, with 15 patrolled beaches
- 261 playspaces spread across local parks and reserves
- 905 kilometres of shared pathways for cycling, walking and pedestrian use.

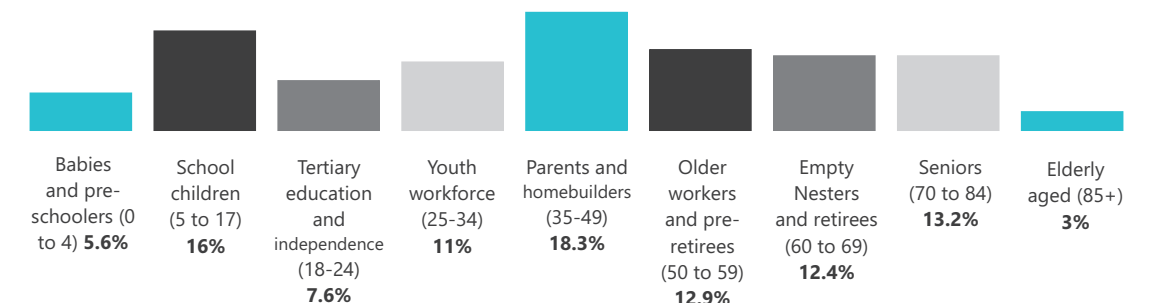
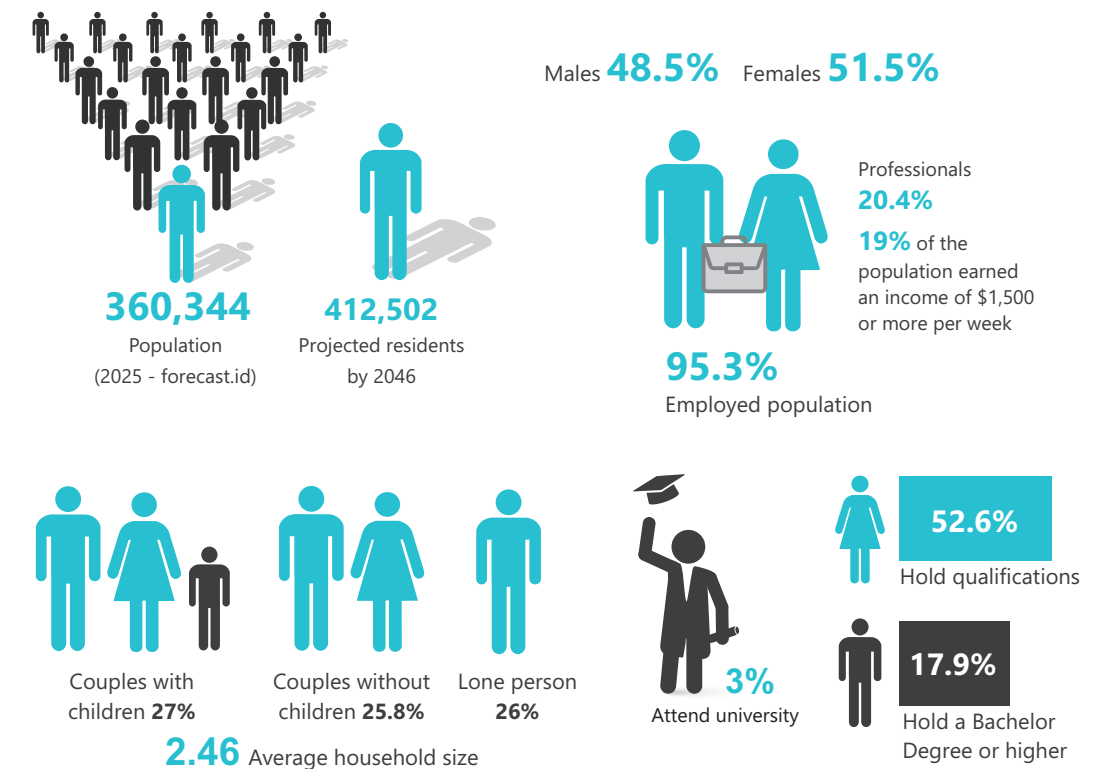


People of the Central Coast

Those living on the Central Coast have an incredible sense of community; they are passionate, friendly, welcoming and proud of where they come from.

Population

- 3rd most populated region in NSW
- 9th largest region in Australia
- 349,173 people living in the Central Coast (id population and household forecast 2022)
- 5.5 million people living within a two hour travel distance





To Bryant Drive
 To Tuggerah Station (400m)

Map Legend

- | | | | |
|-------------------|-----------------------------|--------------|--------------------------------|
| Sports Field ID | Water Storage Units | Floodlights | Parking Bays |
| Amenities | Main Boulevard (560m x 10m) | Service Gate | Public Parking |
| Temporary Toilets | Shared Pathway (2,020m) | Helipad | Ambulance / Emergency Vehicles |

Technical specifications

Oval sports fields

AFL

Field numbers : **12 and 34** (combining 1&2 and 3&4)

151m x 112m with a minimum 4m run off area

Field number : **67** (combining 6&7)

151m x 110m with a minimum 4m run off area

Orientation for these fields is 75° east of north

Field number : **9** (main field)

159m x 127m with a minimum 4m run off area

Orientation for main field is 44° east of north

Cricket

Field numbers : **12 and 34** (combining 1&2 and 3&4)

Pitch 25m x 6m – Outfield 60m x 72m (measured from centre of wicket table)

Field number : **67** (combining 6&7)

Pitch 25m x 6m – Outfield 56m x 72m (measured from centre of wicket table)

Orientation for above fields is 7° east of north

Field number : **9** (main field)

Pitch 25m x 15m – Outfield 57.5m x 79.5m (measured from centre of outside pitch)

Orientation for main field is 44° east of north

All fields have a minimum 4m run off area

Fields 12, 34 and 67 are clear of rectangular playing fields

Floodlights

All fields have 100 lux lighting levels, except for Field 5 which has 300+ lux levels.

Rectangular sports fields

Soccer

Field numbers : **1 to 8 inclusive**

105m x 68m with a min. 4m run off area

Orientation for all fields is 7° east of north

Rugby

League or Union

Field numbers : **1 to 4 inclusive**

100m x 68m with an in-goal area of 8.7m from try line to dead ball line

Field number : **5**

100m x 70m with an in-goal area of 22m from try line to dead ball line

Field numbers : **6 to 7 inclusive**

100m x 68m with an in-goal area of 8m from try line to dead ball line

All fields have a minimum 4m run off area

Goal post width 5.7m

Orientation for all fields is 7° east of north

Turf species and drainage

The turf species used on Field 5 is Cynodon Dactylon – Santa Ana.

All other fields are Cynodon Dactylon - 'Legend' Couch incl. cricket wickets.

All fields, except for Field 5, are constructed on a **soil** based profile – 'sand slitted' with subsurface drainage. Field 5 has been designed as a **sand** based field with subsurface drainage and a perched water table – allowing for faster drainage.

Event guidelines

Booking an event

A comprehensive guideline to holding events at the Complex can be downloaded from Council's website (refer to Contacts on back page). These guidelines provide advice regarding the application process, statutory requirements and other Council provisions. We are also available to guide you through the process.

Site inspections

If you have never been, we look forward to welcoming you to the Complex. Please give us at least two week's notice to confirm a suitable date and time.

Application process

Once you have familiarised yourself with the Event Guidelines and have determined which areas / sports fields you would like to book for your event, you will be able to download the Event Application form from the website (refer to Contacts on back page). You are also encouraged to call our officer to determine availability of the areas you require before submitting your application form for processing.

Once your application has been approved in principle, you will be required to submit your Risk Management Plan and Environmental Risk Assessment. Easy to follow templates are available to assist you. We also have blue-print Traffic Management Plans from which you can draft your Traffic Guidance Schemes (if required).

Fees and charges

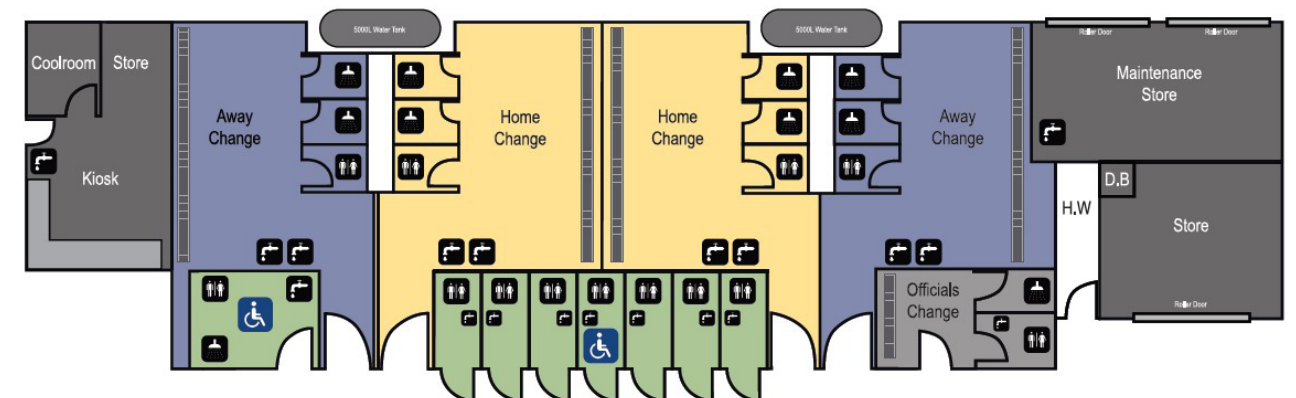
Upon receipt of your application, a Cost Estimate will be prepared for your consideration before finalising the hiring agreement. Fees and charges are adopted by Council and reviewed annually.

Safety, security and services

Our Event Guidelines (available on the website) can provide you with all the information needed to deliver a successful event. From food and beverages, to waste management, this comprehensive document will advise and direct you. If you can't find the answers you are looking for, our office is happy to take your call.



Amenities



Map Legend

- | | | |
|--------------------|---------------------|-------------------|
| Amenities | Aluminium Bench | Home Change Rooms |
| Ambulant Amenities | Water Storage Units | Away Change Rooms |
| Showers | Basins | Public Amenities |



Amenities block (built)

- Two home & away dressing sheds with internal showers and toilets
- Seven public toilets with one ambulant toilet
- One fully accessible change room including shower
- One officials change room with internal shower and toilet
- Kiosk with cold room and storage

Amenities block (stalls)

- Two blocks consisting of 14 stalls each
- Each block is interchangeable M/F





Sports equipment

- 8 pairs soccer goal posts (7.32 x 2.44m)
- 8 pairs soccer box nets (for above)
- 4 sets of 8 AFL goal posts (12m / 8m)
- 7 pairs rugby goal posts (12m)

Additional equipment

We have a range of equipment (on site and at no hire charge) to assist you with the delivery of your event.

- Mobile electronic scoreboard (can be set up for almost all sporting codes)
- Public Address System (covers the complex or can be isolated to certain areas)
- Mobile grandstands (20 units seating 50 each)
- Crowd control barriers (195 units / 2.26m x 1.10m = Approx. 420 running meters)
- Field 5 (premier field) has a white picket fence installed around it.

Funding

Grants and sponsorships are available to help with your next event

Major Events are a key component of the visitor economy and Central Coast Council is committed to developing and attracting sporting and entertainment events to the Central Coast.

There are many grants and sponsorships available for event organisers to help fund your next event.

For more information visit
centralcoast.nsw.gov.au/grants



Testimonials

"We, the German Women's National Team, had the privilege of utilizing the Central Coast Regional Sporting & Recreation Complex during our participation in the FIFA Women's World Cup 2023. The facility proved to be an outstanding venue for our daily training sessions. We would like to particularly emphasize that the condition of the playing field was excellent. The care and maintenance of the turf contributed to an optimal training environment, which was crucial for our team. We were 100% satisfied and would return without hesitation."

*German Women's National Team
FIFA Women's World Cup 2023
Valentin Rudolph
Team Manager Women's National Team*

"The Central Coast Regional Sporting & Recreation Complex is an amazing facility that has allowed our squad to train on a stadium quality pitch as needed to give our team the best possible preparation heading into A-League competition matches. The complex has also allowed our Academy Mens, Womens and youth teams to train and play pre-season games on a great surface, as well as host tournament style pre-season competitions."

*Darren Dobson
A-League Men Team Manager
Central Coast Mariners FC*

"I highly recommend the Central Coast Regional Sporting and Recreation Complex as an exceptional venue for sports teams and events. The pitches at the complex are outstanding. The Premier field, in particular, is well maintained providing a high-quality playing surface that met all our training requirements. The management and staff of the complex were incredibly accommodating and professional. The location of the complex, nestled in the scenic Central Coast region, offered a serene environment that was conducive to focus and team bonding. I wholeheartedly recommend the complex for any sporting event or team training camp."

*Lincoln Xue : Tour Manager,
Chinese Guangdong Women's Team*



"I express my heartfelt appreciation for the exceptional facilities provided at the Central Coast Regional Sporting and Recreation Complex in Tuggerah. The pitch was in outstanding condition providing a playing surface that allowed our players to perform at their best. The attention to detail in maintaining the pitch is commendable and reflects a commitment to excellence. I would highly recommend this complex to others."

*Apple Htaiporn Suwanmethajarn :
Logistics Manager, Buriram United Thailand*

Contacts

Karen Lightfoot

Regional Sports Activation Officer

T: +61 (02) 4350 5352

M: +61 (04) 3619 2120

E: Karen.Lightfoot@centralcoast.nsw.gov.au

E: CCRSRC@centralcoast.nsw.gov.au

Central Coast Regional

Sporting & Recreation Complex

20 Lake Road, Tuggerah NSW 2259

[centralcoast.nsw.gov.au/
regionalsportingcomplex](http://centralcoast.nsw.gov.au/regionalsportingcomplex)

Central
Coast
Council

Central Coast
Regional Sporting and
Recreation Complex

