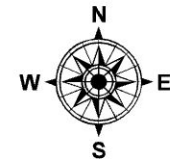


**Figure 3**  
**Southern Sewerage Works Plan - 2024**

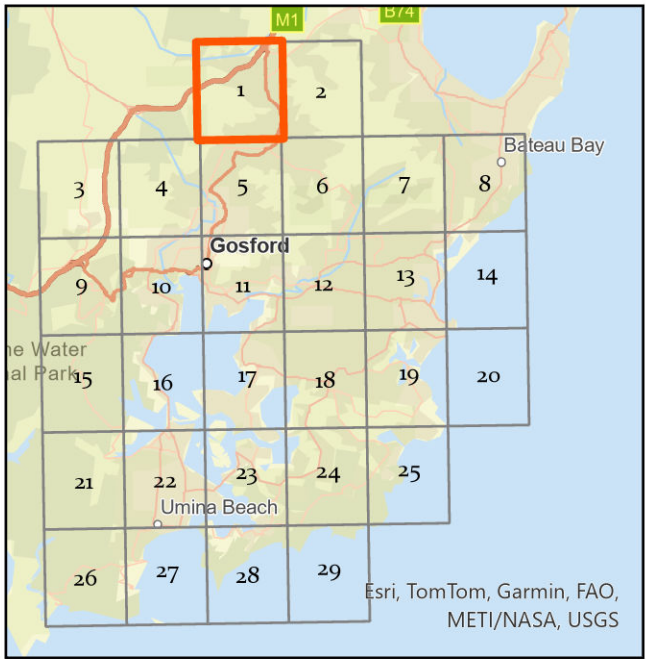




**CENTRAL COAST COUNCIL**  
**PROPOSED SEWER ASSETS DSP 2024**  
**SEWERAGE WINNIE BAY**

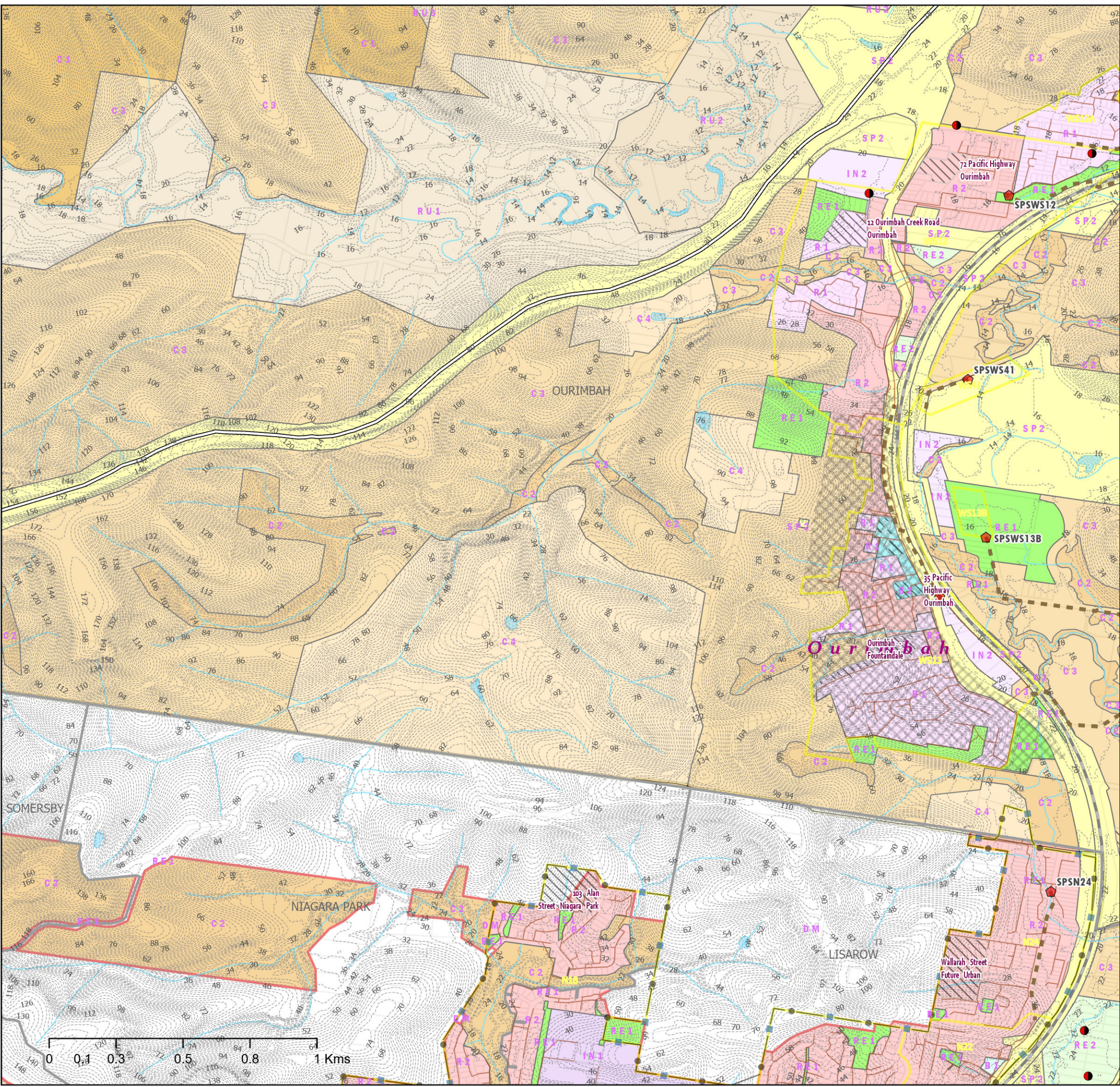
**Legend**

- |                                     |                                       |
|-------------------------------------|---------------------------------------|
| ● Winnie Bay EPL Boundary           | Water Bodies                          |
| ● SPS Upgrade                       | LEP_2022_LandZoningMap                |
| ● Private Pump Station              | B1 - Neighbourhood Centre             |
| ● SPS                               | B2 - Local Centre                     |
| ● STP                               | C1 - National Parks & Nature Reserves |
| ■ Proposed Sewer Mains 225mm        | C2 - Environmental Conservation       |
| ■ Proposed Sewer Mains >=300mm      | C3 - Environmental Management         |
| ■ New Sewer_Rising_Mains            | C4 - Environmental Living             |
| ■ Sewer Gravity Mains               | IN1 - General Industrial              |
| ■ Rising Main                       | IN2 - Light Industrial                |
| ■ Sewer Catchment Boundaries        | R1 - General Residential              |
| ■ Suburbs                           | R2 - Low Density Residential          |
| ■ M1 Motorway                       | RE1 - Public Recreation               |
| ■ Railway                           | RE2 - Private Recreation              |
| ■ Investigation Areas by Developers | RU1 - Primary Production              |
| ■ Development Sites 2021-2046       | RU2 - Rural Landscape                 |
| ■ ForecastID_Centres                | RU3 - Forestry                        |
| --- Contours 2m                     | SP2 - Infrastructure                  |
| --- Natural Drainage Layers         | DM - Deferred Matter                  |

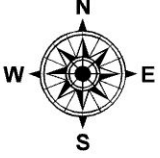


Siva Balasubramanian  
Date: 24/03/2025  
Source: Central Coast Council  
Projection: GDA\_1994\_Transverse\_Mercator; GCS\_GDA\_1994

**DISCLAIMER**  
These maps have been compiled from various sources and the publisher and/or contributors accept no responsibility for any injury, loss or damage arising from the use, error or any omission therein. While all care is taken to ensure a high degree of accuracy, users are invited to notify Councils Geospatial Group of any map discrepancies. No part of this map may be reproduced without prior written permission.  
© 2024 Department of Planning, Housing and Infrastructure & © 2025 Central Coast Council, All Rights Reserved.



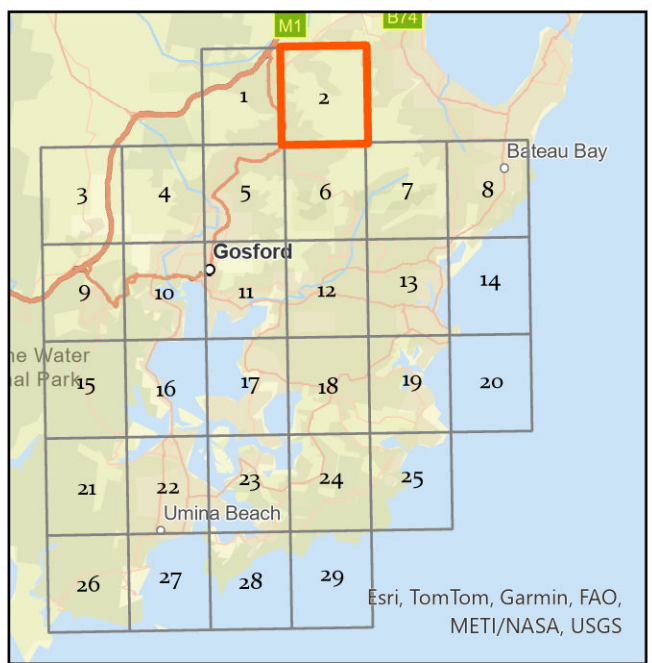




# CENTRAL COAST COUNCIL PROPOSED SEWER ASSETS DSP 2024 SEWERAGE WINNIE BAY

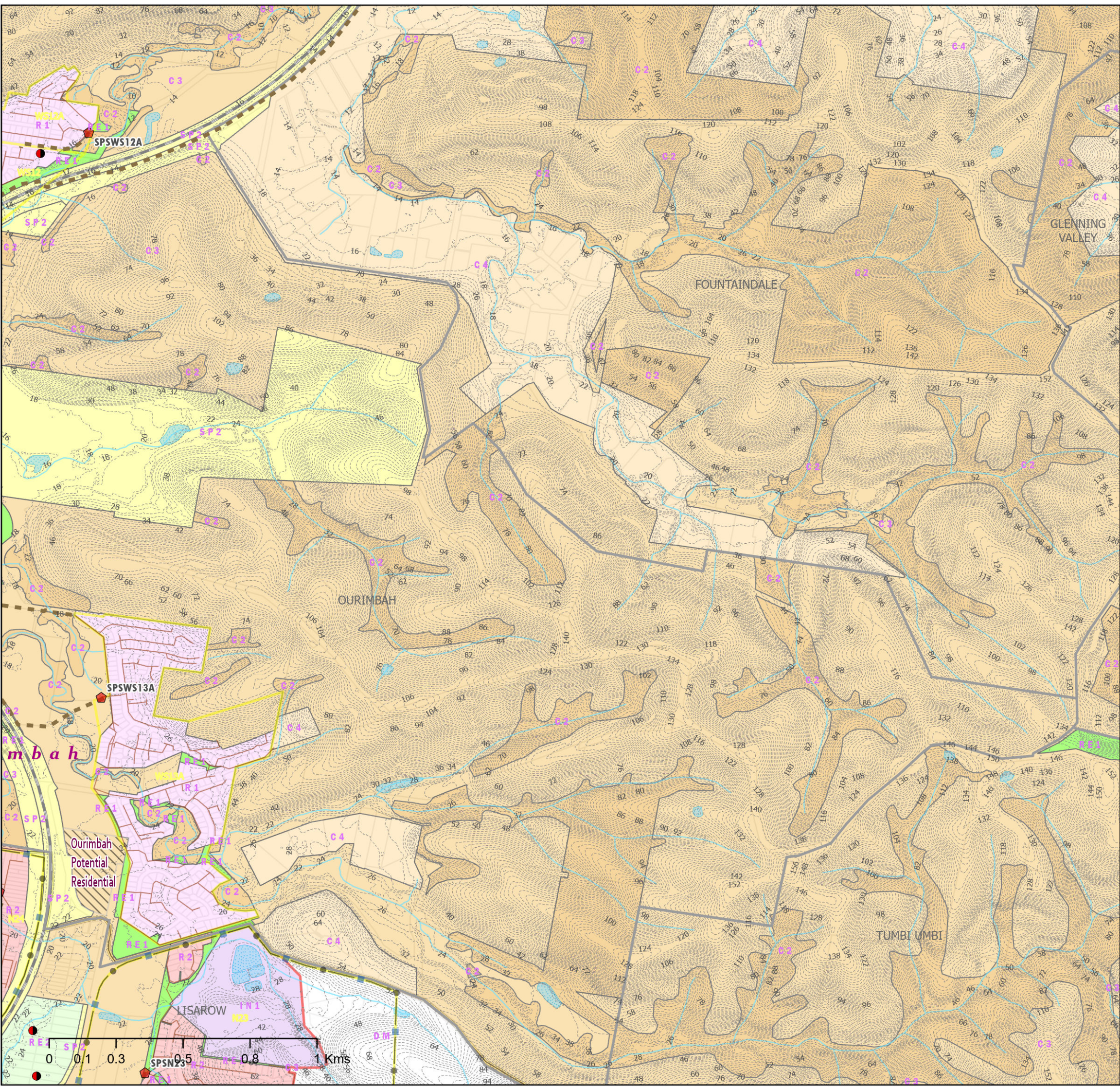
## Legend

- |                                   |                                 |
|-----------------------------------|---------------------------------|
| Winnie Bay EPL Boundary           | Development Sites 2021-2046     |
| SPS Upgrade                       | ForecastID_Centres              |
| Private Pump Station              | Contours 2m                     |
| SPS                               | Natural Drainage Layers         |
| STP                               | Water Bodies                    |
| Proposed Sewer Mains 225mm        | LEP_2022_LandZoningMap          |
| Proposed Sewer Mains >=300mm      | C2 - Environmental Conservation |
| New Sewer_Rising_Mains            | C3 - Environmental Management   |
| Sewer Gravity Mains               | C4 - Environmental Living       |
| Rising Main                       | IN1 - General Industrial        |
| Sewer Catchment Boundaries        | R1 - General Residential        |
| Suburbs                           | R2 - Low Density Residential    |
| M1 Motorway                       | RE1 - Public Recreation         |
| Railway                           | RE2 - Private Recreation        |
| Investigation Areas by Developers | SP2 - Infrastructure            |
|                                   | DM - Deferred Matter            |

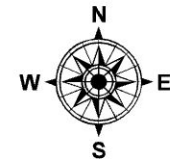


Siva Balasubramanian  
Date: 24/03/2025  
Source: Central Coast Council  
Projection: GDA\_1994\_Transverse\_Mercator; GCS\_GDA\_1994  
Path: \\nive.gosford.nsw.gov.au\water\AM&P\Siva\DSP-2024\Sewer Catchment KSTP

**DISCLAIMER**  
These maps have been compiled from various sources and the publisher and/or contributors accept no responsibility for any injury, loss or damage arising from the use, error or any omission therein. While all care is taken to ensure a high degree of accuracy, users are invited to notify Councils Geospatial Group of any map discrepancies. No part of this map may be reproduced without prior written permission.  
© 2024 Department of Planning, Housing and Infrastructure & © 2025 Central Coast Council, All Rights Reserved.



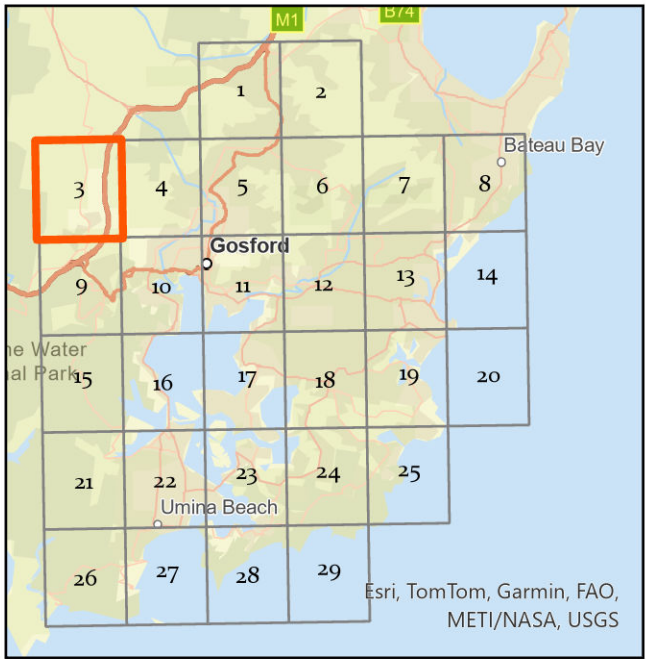




**CENTRAL COAST COUNCIL**  
**PROPOSED SEWER ASSETS DSP 2024**  
**SEWERAGE WINNIE BAY**

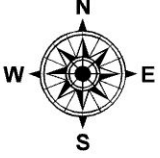
**Legend**

- |                                   |                                      |
|-----------------------------------|--------------------------------------|
| Winnie Bay EPL Boundary           | ForecastID_Centres                   |
| SPS Upgrade                       | Contours 2m                          |
| Private Pump Station              | Natural Drainage Layers              |
| SPS                               | Water Bodies                         |
| STP                               | LEP_2022_LandZoningMap               |
| Proposed Sewer Mains 225mm        | B5 - Business Development            |
| Proposed Sewer Mains >=300mm      | C1 - National Parks& Nature Reserves |
| New Sewer_Rising_Mains            | C2 - Environmental Conservation      |
| Sewer Gravity Mains               | C3 - Environmental Management        |
| Rising Main                       | C4 - Environmental Living            |
| Sewer Catchment Boundaries        | IN1 - General Industrial             |
| Suburbs                           | RE1 - Public Recreation              |
| M1 Motorway                       | RU1 - Primary Production             |
| Railway                           | RU2 - Rural Landscape                |
| Investigation Areas by Developers | RU3 - Forestry                       |
| Development Sites 2021-2046       | SP2 - Infrastructure                 |
|                                   | DM - Deferred Matter                 |



Path: \\nrike.gosford.nsw.gov.au\water\AM&P\Siva\DSP-2024\Sewer Catchment KSTP

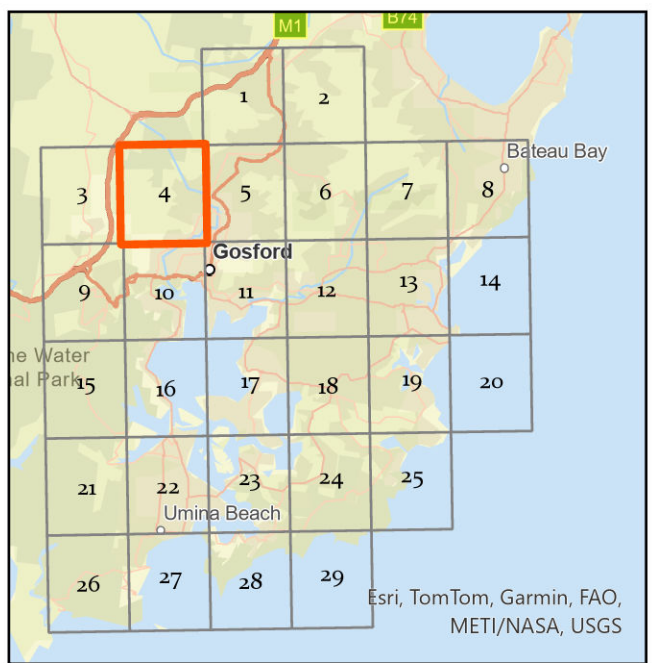




# CENTRAL COAST COUNCIL PROPOSED SEWER ASSETS DSP 2024 SEWERAGE WINNIE BAY

## Legend

- Winnie Bay EPL Boundary
- SPS Upgrade
- Private Pump Station
- SPS
- STP
- Proposed Sewer Mains 225mm
- Proposed Sewer Mains >=300mm
- New Sewer\_Rising\_Mains
- Sewer Gravity Mains
- Rising Main
- Sewer Catchment Boundaries
- Suburbs
- M1 Motorway
- Railway
- Investigation Areas by Developers
- Development Sites 2021-2046
- ForecastID\_Centres
- Contours 2m
- Natural Drainage Layers
- Water Bodies
- LEP\_2022\_LandZoningMap
  - C2 - Environmental Conservation
  - C3 - Environmental Management
  - IN1 - General Industrial
  - R2 - Low Density Residential
  - RE1 - Public Recreation
  - RU1 - Primary Production
  - RU2 - Rural Landscape
  - RU3 - Forestry
  - SP2 - Infrastructure
  - W2 - Recreational Waterways
  - DM - Deferred Matter

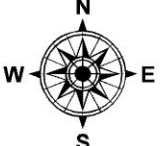


Siva Balasubramanian  
Date: 24/03/2025  
Source: Central Coast Council  
Projection: GDA\_1994\_Transverse\_Mercator; GCS\_GDA\_1994  
Path: \\nke.gosford.nsw.gov.au\water\AM&P\Siva\DSP-2024\Sewer Catchment KSP

**DISCLAIMER**  
These maps have been compiled from various sources and the publisher and/or contributors accept no responsibility for any injury, loss or damage arising from the use, error or any omission therein. While all care is taken to ensure a high degree of accuracy, users are invited to notify Councils Geospatial Group of any map discrepancies. No part of this map may be reproduced without prior written permission.  
© 2024 Department of Planning, Housing and Infrastructure & © 2025 Central Coast Council, All Rights Reserved.

DSP MAPS 2024

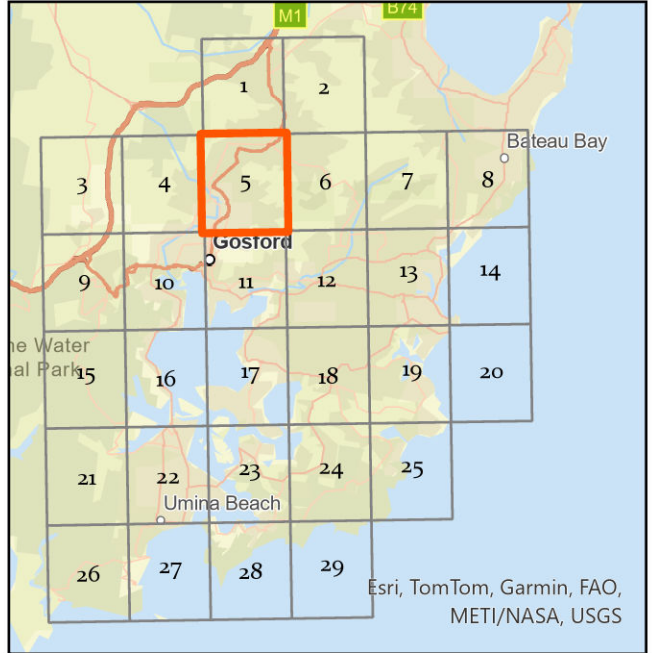




CENTRAL COAST COUNCIL  
PROPOSED SEWER ASSETS DSP 2024  
SEWERAGE WINNIE BAY

Legend

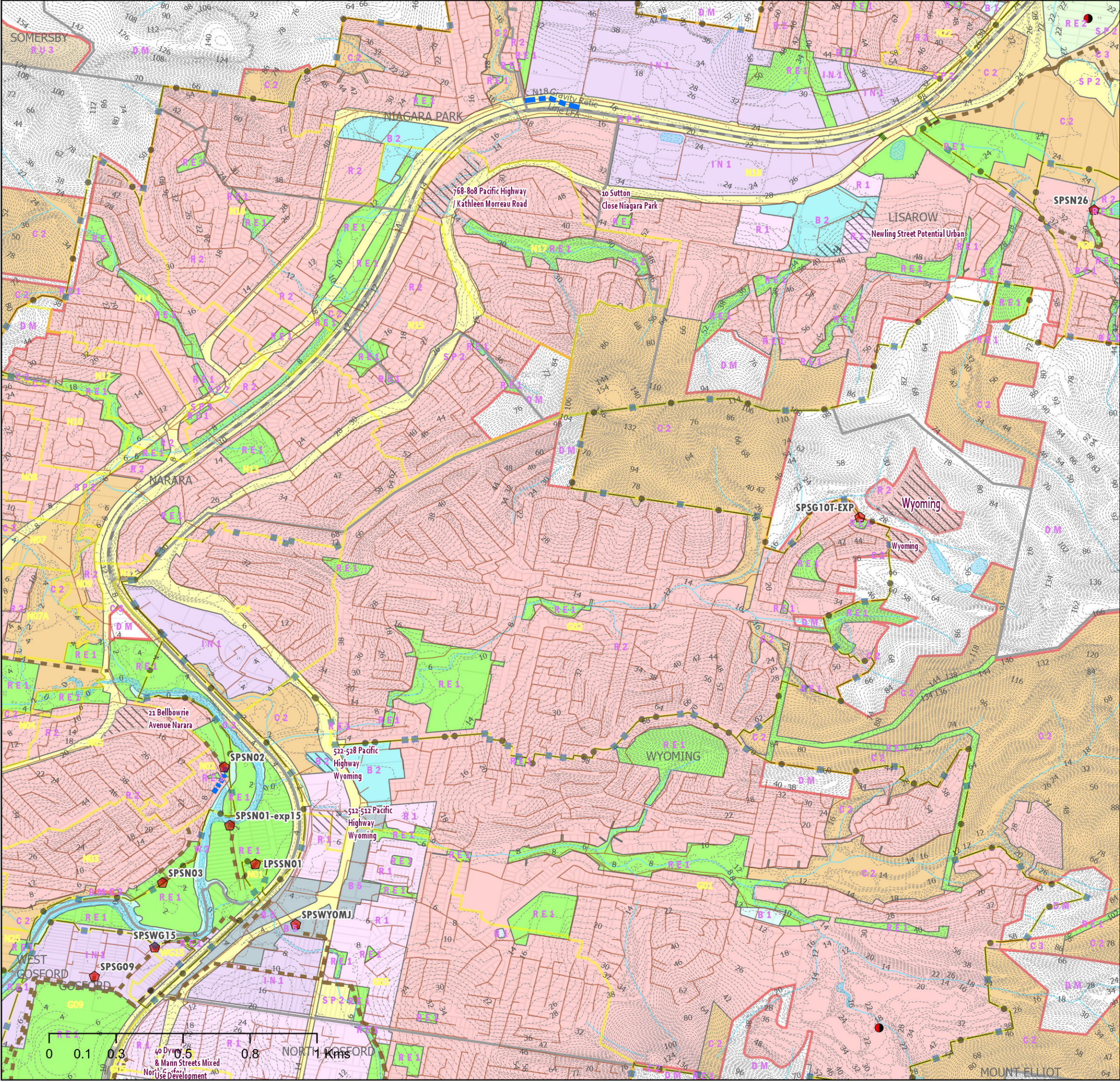
- Winnie Bay EPL Boundary
- SPS Upgrade
- Private Pump Station
- SPS
- STP
- Proposed Sewer Mains 225mm
- Proposed Sewer Mains >=300mm
- New Sewer\_Rising\_Mains
- Sewer Gravity Mains
- Rising Main
- Sewer Catchment Boundaries
- Suburbs
- M1 Motorway
- Railway
- Investigation Areas by Developers
- Development Sites 2021-2046
- ForecastID\_Centres
- Contours 2m
- Natural Drainage Layers
- Water Bodies
- LEP\_2022\_LandZoningMap
  - B1 - Neighbourhood Centre
  - B2 - Local Centre
  - B5 - Business Development
  - C2 - Environmental Conservation
  - C3 - Environmental Management
  - IN1 - General Industrial
  - R1 - General Residential
  - R2 - Low Density Residential
  - RE1 - Public Recreation
  - RE2 - Private Recreation
  - RU3 - Forestry
  - SP2 - Infrastructure
  - W2 - Recreational Waterways
  - DM - Deferred Matter



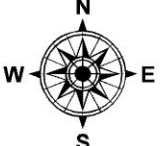
Siva Balasubramanian  
Date: 24/03/2025  
Source: Central Coast Council  
Projection: GDA\_1994\_Transverse\_Mercator; GCS\_GDA\_1994  
Path: \\nrike.gosford.nsw.gov.au\water\AM&P\Siva\DSP-2024\Sewer Catchment KSTP

**DISCLAIMER**  
These maps have been compiled from various sources and the publisher and/or contributors accept no responsibility for any injury, loss or damage arising from the use, error or any omission therein. While all care is taken to ensure a high degree of accuracy, users are invited to notify Councils Geospatial Group of any map discrepancies. No part of this map may be reproduced without prior written permission.  
© 2024 Department of Planning, Housing and Infrastructure & © 2025 Central Coast Council, All Rights Reserved.

DSP MAPS 2024



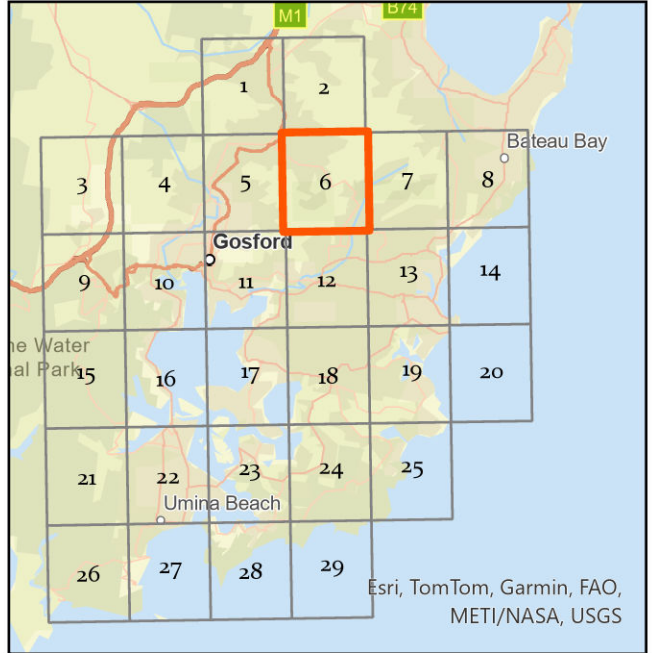




CENTRAL COAST COUNCIL  
PROPOSED SEWER ASSETS DSP 2024  
SEWERAGE WINNIE BAY

Legend

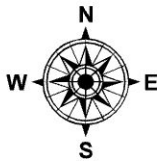
- |                                |                                     |
|--------------------------------|-------------------------------------|
| ● Winnie Bay EPL Boundary      | ▨ Investigation Areas by Developers |
| ● SPS Upgrade                  | ▨ Development Sites 2021-2046       |
| ● Private Pump Station         | ▨ ForecastID_Centres                |
| ● SPS                          | --- Contours 2m                     |
| ● STP                          | — Natural Drainage Layers           |
| ■ Proposed Sewer Mains 225mm   | ■ Water Bodies                      |
| ■ Proposed Sewer Mains >=300mm | LEP_2022_LandZoningMap              |
| ■ New Sewer_Rising_Mains       | ■ C2 - Environmental Conservation   |
| — Sewer Gravity Mains          | ■ C3 - Environmental Management     |
| ■ Rising Main                  | ■ IN1 - General Industrial          |
| ■ Sewer Catchment Boundaries   | ■ R2 - Low Density Residential      |
| ■ Suburbs                      | ■ RE1 - Public Recreation           |
| — M1 Motorway                  | ■ RE2 - Private Recreation          |
| — Railway                      | ■ SP2 - Infrastructure              |
|                                | ■ DM - Deferred Matter              |



Siva Balasubramanian  
Date: 24/03/2025  
Source: Central Coast Council  
Projection: GDA\_1994\_Transverse\_Mercator; GCS\_GDA\_1994  
Path: \\nike.gosford.nsw.gov.au\water\AM&P\Siva\DSP-2024\Sewer Catchment KSTP

**DISCLAIMER**  
These maps have been compiled from various sources and the publisher and/or contributors accept no responsibility for any injury, loss or damage arising from the use, error or any omission therein. While all care is taken to ensure a high degree of accuracy, users are invited to notify Councils Geospatial Group of any map discrepancies. No part of this map may be reproduced without prior written permission.  
© 2024 Department of Planning, Housing and Infrastructure & © 2025 Central Coast Council, All Rights Reserved.

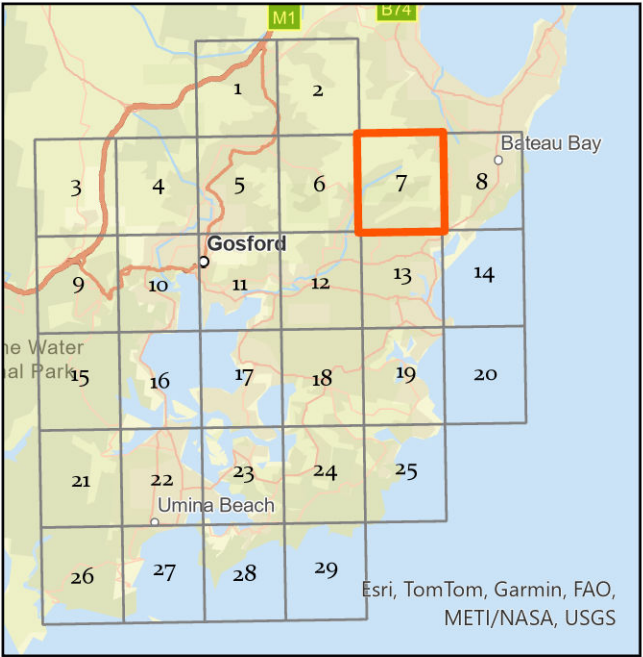




CENTRAL COAST COUNCIL  
PROPOSED SEWER ASSETS DSP 2024  
SEWERAGE WINNIE BAY

Legend

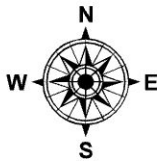
- Winnie Bay EPL Boundary
- SPS Upgrade
- Private Pump Station
- SPS
- STP
- Proposed Sewer Mains 225mm
- Proposed Sewer Mains  $\geq 300$ mm
- New Sewer\_Rising\_Mains
- Sewer Gravity Mains
- Rising Main
- Sewer Catchment Boundaries
- Suburbs
- M1 Motorway
- Railway
- Investigation Areas by Developers
- Development Sites 2021-2046
- ForecastID\_Centres
- Contours 2m
- Natural Drainage Layers
- Water Bodies
- LEP\_2022\_LandZoningMap
  - C1 - National Parks& Nature Reserves
  - C2 - Environmental Conservation
  - C3 - Environmental Management
  - C4 - Environmental Living
  - R2 - Low Density Residential
  - RE1 - Public Recreation
  - SP2 - Infrastructure
  - DM - Deferred Matter



Siva Balasubramanian  
Date: 24/03/2025  
Source: Central Coast Council  
Projection: GDA\_1994\_Transverse\_Mercator; GCS\_GDA\_1994

**DISCLAIMER**  
These maps have been compiled from various sources and the publisher and/or contributors accept no responsibility for any injury, loss or damage arising from the use, error or any omission therein. While all care is taken to ensure a high degree of accuracy, users are invited to notify Councils Geospatial Group of any map discrepancies. No part of this map may be reproduced without prior written permission.  
© 2024 Department of Planning, Housing and Infrastructure & © 2025 Central Coast Council, All Rights Reserved.

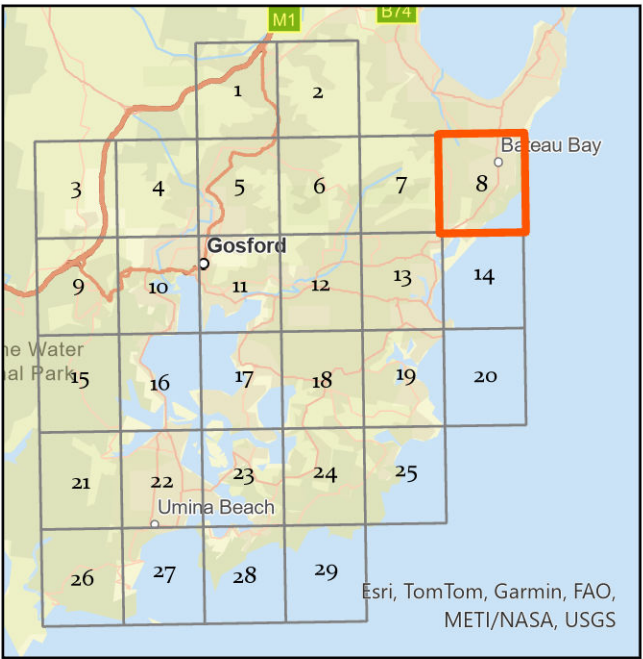




CENTRAL COAST COUNCIL  
PROPOSED SEWER ASSETS DSP 2024  
SEWERAGE WINNIE BAY

Legend

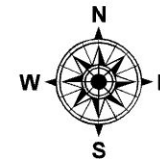
- Winnie Bay EPL Boundary
- SPS Upgrade
- Private Pump Station
- SPS
- STP
- Proposed Sewer Mains 225mm
- Proposed Sewer Mains >=300mm
- New Sewer\_Rising\_Mains
- Sewer Gravity Mains
- Rising Main
- Sewer Catchment Boundaries
- Suburbs
- M1 Motorway
- Railway
- Investigation Areas by Developers
- Development Sites 2021-2046
- ForecastID\_Centres
- Contours 2m
- Natural Drainage Layers
- Water Bodies
- LEP\_2022\_LandZoningMap
  - B1 - Neighbourhood Centre
  - B4 - Mixed Use
  - C1 - National Parks& Nature Reserves
  - C2 - Environmental Conservation
  - C3 - Environmental Management
  - C4 - Environmental Living
  - IN2 - Light Industrial
  - R1 - General Residential
  - R2 - Low Density Residential
  - RE1 - Public Recreation
  - RE2 - Private Recreation
  - SP2 - Infrastructure
  - UL - Unzoned Land
  - DM - Deferred Matter



Siva Balasubramanian  
Date: 24/03/2025  
Source: Central Coast Council  
Projection: GDA\_1994\_Transverse\_Mercator; GCS\_GDA\_1994  
Path: \\nike.gosford.nsw.gov.au\water\AM&P\Siva\DSP-2024\Sewer Catchment KSTP

**DISCLAIMER**  
These maps have been compiled from various sources and the publisher and/or contributors accept no responsibility for any injury, loss or damage arising from the use, error or any omission therein. While all care is taken to ensure a high degree of accuracy, users are invited to notify Councils Geospatial Group of any map discrepancies. No part of this map may be reproduced without prior written permission.  
© 2024 Department of Planning, Housing and Infrastructure & © 2025 Central Coast Council, All Rights Reserved.

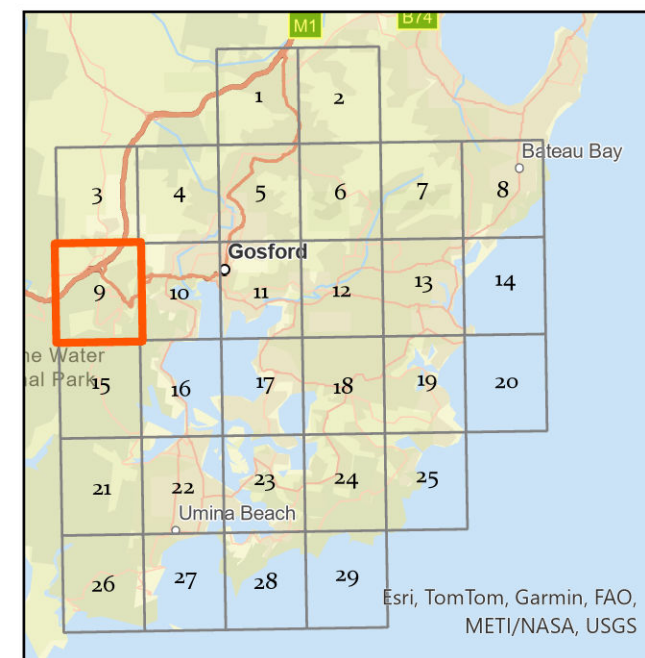




# CENTRAL COAST COUNCIL PROPOSED SEWER ASSETS DSP 2024 SEWERAGE WINNIE BAY

## Legend

- Winnie Bay EPL Boundary
- SPS Upgrade
- Private Pump Station
- SPS
- STP
- Proposed Sewer Mains 225mm
- Proposed Sewer Mains >=300mm
- New Sewer\_Rising\_Mains
- Sewer Gravity Mains
- Rising Main
- Sewer Catchment Boundaries
- Suburbs
- M1 Motorway
- Railway
- Investigation Areas by Developers
- Development Sites 2021-2046
- ForecastID\_Centres
- Contours 2m
- Natural Drainage Layers
- Water Bodies
- LEP\_2022\_LandZoningMap
  - B1 - Neighbourhood Centre
  - B5 - Business Development
  - C1 - National Parks & Nature Reserves
  - C2 - Environmental Conservation
  - C3 - Environmental Management
  - C4 - Environmental Living
  - IN1 - General Industrial
  - R2 - Low Density Residential
  - RE1 - Public Recreation
  - RE2 - Private Recreation
  - RU1 - Primary Production
  - RU2 - Rural Landscape
  - SP1 - Special Activities
  - SP2 - Infrastructure
  - DM - Deferred Matter

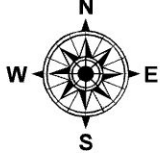


Siva Balasubramanian  
Date: 24/03/2025  
Source: Central Coast Council  
Projection: GDA\_1994\_Transverse\_Mercator; GCS\_GDA\_1994

**DISCLAIMER**  
These maps have been compiled from various sources and the publisher and/or contributors accept no responsibility for any injury, loss or damage arising from the use, error or any omission therein. While all care is taken to ensure a high degree of accuracy, users are invited to notify Councils Geospatial Group of any map discrepancies. No part of this map may be reproduced without prior written permission.  
© 2024 Department of Planning, Housing and Infrastructure & © 2025 Central Coast Council, All Rights Reserved.

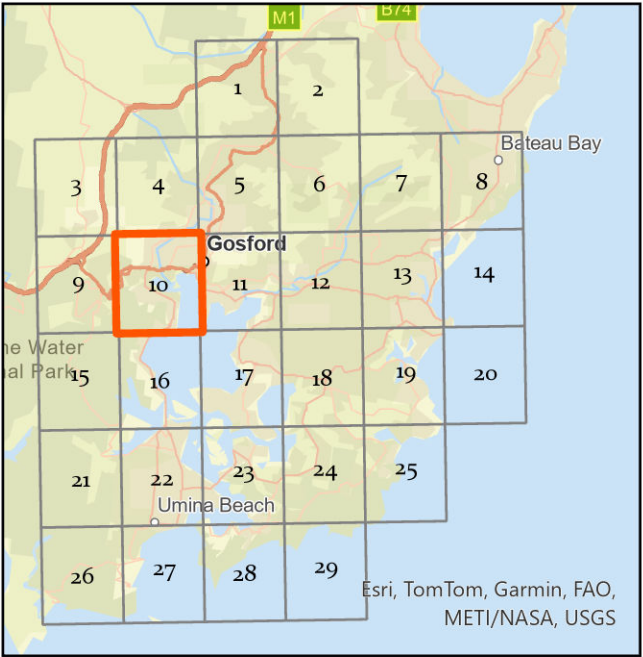


CENTRAL COAST COUNCIL  
PROPOSED SEWER ASSETS DSP 2024  
SEWERAGE WINNIE BAY



Legend

- Winnie Bay EPL Boundary
- SPS Upgrade
- Private Pump Station
- SPS
- STP
- Proposed Sewer Mains 225mm
- Proposed Sewer Mains >=300mm
- New Sewer\_Rising\_Mains
- Sewer Gravity Mains
- Rising Main
- Sewer Catchment Boundaries
- Suburbs
- M1 Motorway
- Railway
- Investigation Areas by Developers
- Development Sites 2021-2046
- ForecastID\_Centres
- Contours 2m
- Natural Drainage Layers
- Water Bodies
- LEP\_2022\_LandZoningMap
- B1 - Neighbourhood Centre
- B2 - Local Centre
- B5 - Business Development
- B6 - Enterprise Corridor
- C1 - National Parks& Nature Reserves
- C2 - Environmental Conservation
- IN1 - General Industrial
- R1 - General Residential
- R2 - Low Density Residential
- RE1 - Public Recreation
- RE2 - Private Recreation
- RU1 - Primary Production
- RU2 - Rural Landscape
- SP1 - Special Activities
- SP2 - Infrastructure
- W2 - Recreational Waterways
- DM - Deferred Matter



Siva Balasubramanian  
Date: 24/03/2025  
Source: Central Coast Council  
Projection: GDA\_1994\_Transverse\_Mercator; GCS\_GDA\_1994  
Path: \\nke.gosford.nsw.gov.au\water\AM\SP\GIS\SP\2024\Sewer Catchment KSP

**DISCLAIMER**  
These maps have been compiled from various sources and the publisher and/or contributors accept no responsibility for any injury, loss or damage arising from the use, error or any omission therein. While all care is taken to ensure a high degree of accuracy, users are invited to notify Councils Geospatial Group of any map discrepancies. No part of this map may be reproduced without prior written permission.  
© 2024 Department of Planning, Housing and Infrastructure & © 2025 Central Coast Council, All Rights Reserved.

DSP MAPS 2024

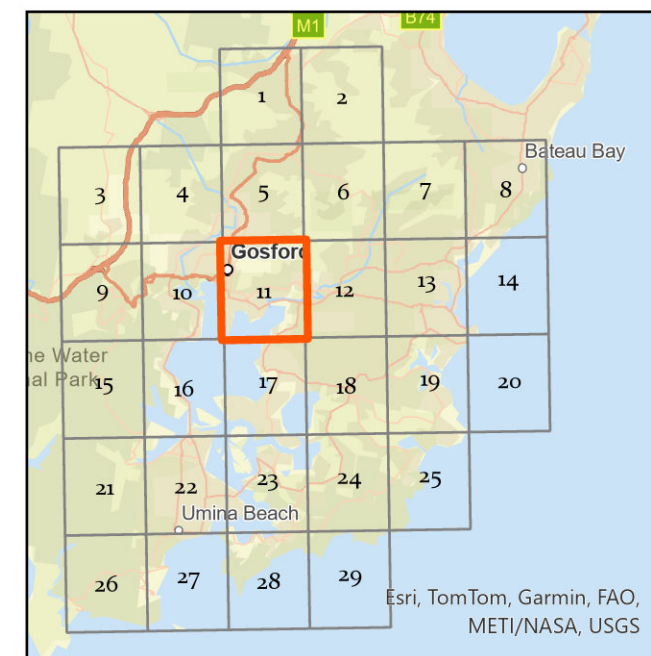




# CENTRAL COAST COUNCIL PROPOSED SEWER ASSETS DSP 2024 SEWERAGE WINNIE BAY

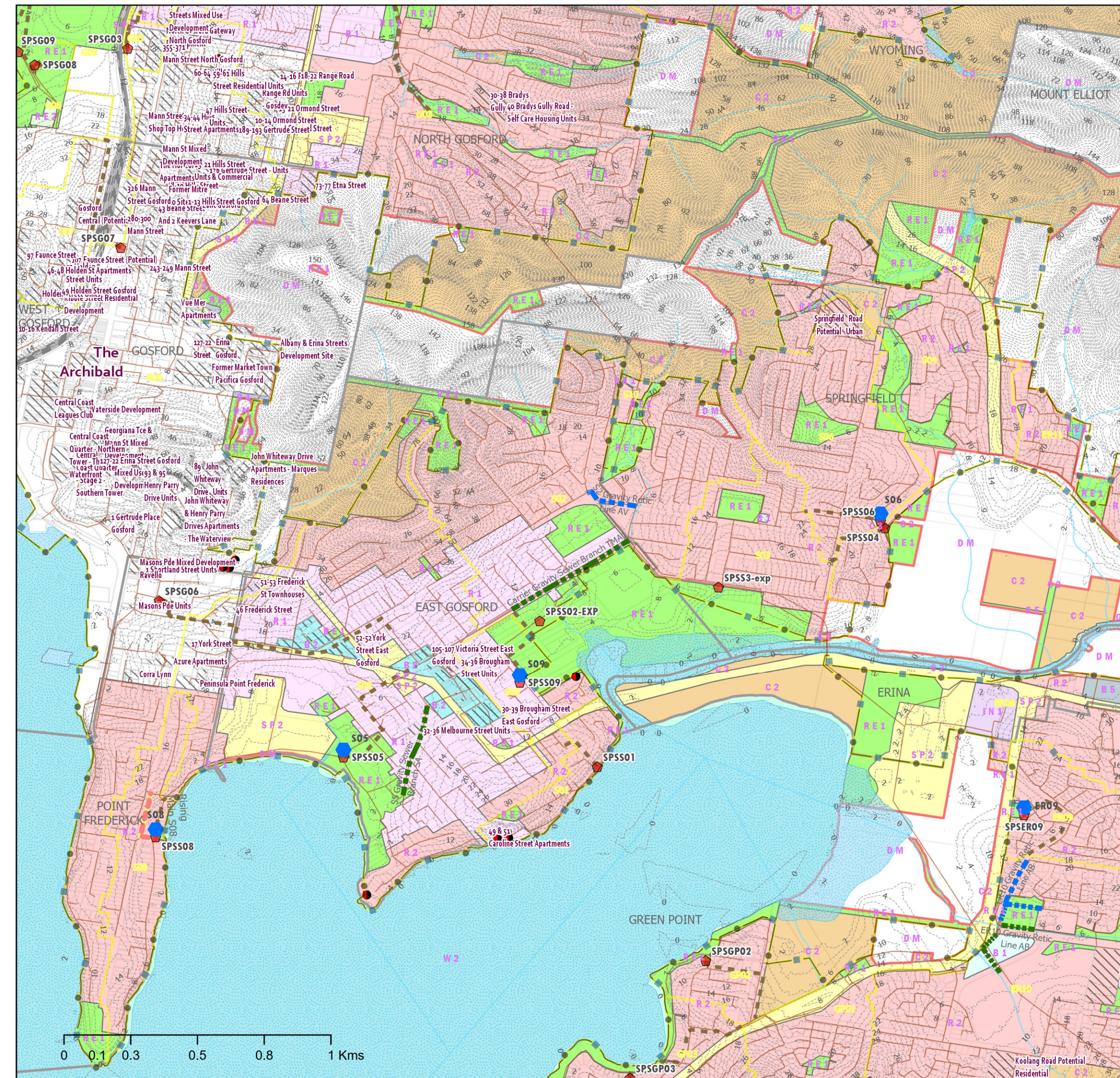
## Legend

- Winnie Bay EPL Boundary
- SPS Upgrade
- Private Pump Station
- SPS
- STP
- Proposed Sewer Mains 225mm
- Proposed Sewer Mains >=300mm
- New Sewer\_Rising\_Mains
- Sewer Gravity Mains
- Rising Main
- Sewer Catchment Boundaries
- Suburbs
- M1 Motorway
- Railway
- Investigation Areas by Developers
- Development Sites 2021-2046
- ForecastID\_Centres
- Contours 2m
- Natural Drainage Layers
- Water Bodies
- LEP\_2022\_LandZoningMap
- B1 - Neighbourhood Centre
- B2 - Local Centre
- B4 - Mixed Use
- B5 - Business Development
- C2 - Environmental Conservation
- C3 - Environmental Management
- IN1 - General Industrial
- R1 - General Residential
- R2 - Low Density Residential
- RE1 - Public Recreation
- RE2 - Private Recreation
- SP2 - Infrastructure
- W2 - Recreational Waterways
- DM - Deferred Matter



Siva Balasubramanian  
Date: 24/03/2025  
Source: Central Coast Council  
Projection: GDA\_1994\_Transverse\_Mercator; GCS\_GDA\_1994  
Path: \\nlnke.gosford.nsw.gov.au\water\AM&P\Siva\DSP-2024\Sewer Catchment KSP

**DISCLAIMER**  
These maps have been compiled from various sources and the publisher and/or contributors accept no responsibility for any injury, loss or damage arising from the use, error or any omission therein. While all care is taken to ensure a high degree of accuracy, users are invited to notify Councils Geospatial Group of any map discrepancies. No part of this map may be reproduced without prior written permission.  
© 2024 Department of Planning, Housing and Infrastructure & © 2025 Central Coast Council, All Rights Reserved.



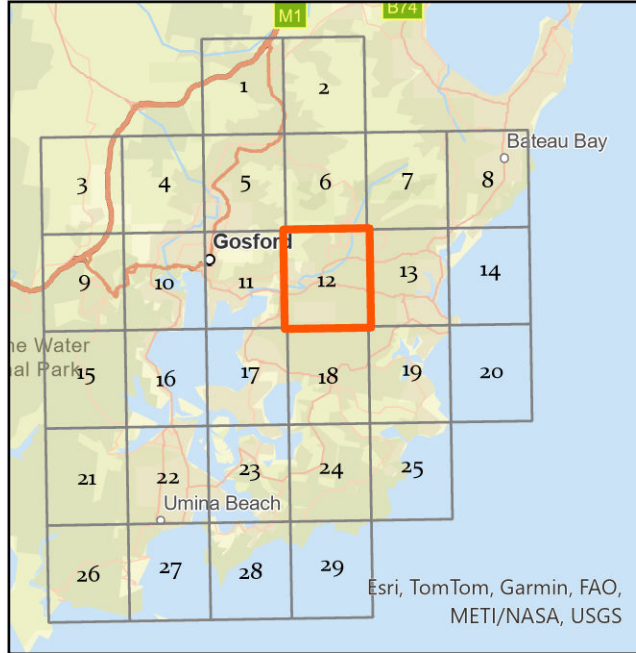




CENTRAL COAST COUNCIL  
PROPOSED SEWER ASSETS DSP 2024  
SEWERAGE WINNIE BAY

Legend

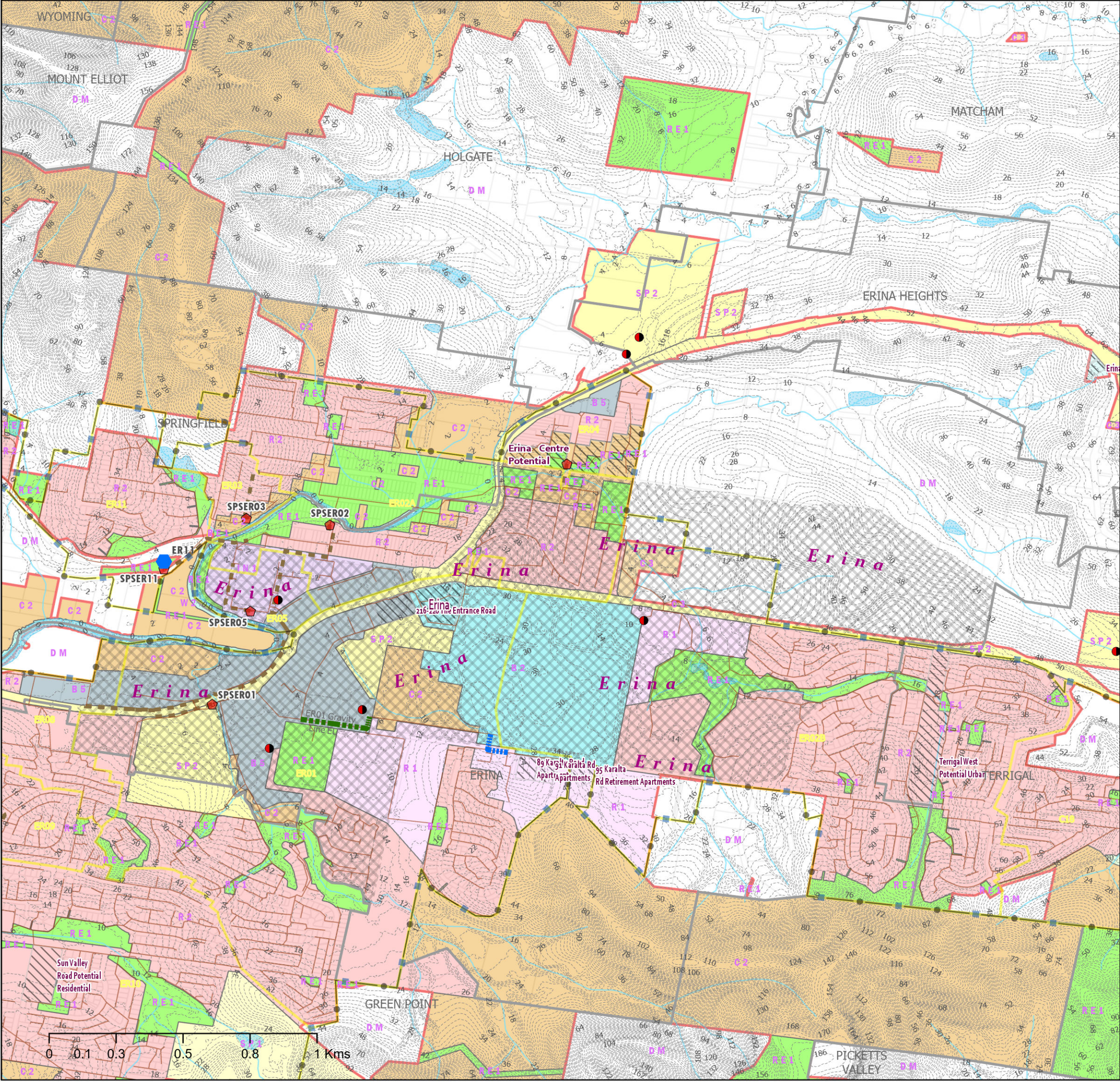
- |                                   |                                 |
|-----------------------------------|---------------------------------|
| Winnie Bay EPL Boundary           | Contours 2m                     |
| SPS Upgrade                       | Natural Drainage Layers         |
| Private Pump Station              | Water Bodies                    |
| SPS                               | LEP_2022_LandZoningMap          |
| STP                               | B1 - Neighbourhood Centre       |
| Proposed Sewer Mains 225mm        | B2 - Local Centre               |
| Proposed Sewer Mains >=300mm      | B5 - Business Development       |
| New Sewer_Rising_Mains            | C2 - Environmental Conservation |
| Sewer Gravity Mains               | C3 - Environmental Management   |
| Rising Main                       | IN1 - General Industrial        |
| Sewer Catchment Boundaries        | R1 - General Residential        |
| Suburbs                           | R2 - Low Density Residential    |
| M1 Motorway                       | RE1 - Public Recreation         |
| Railway                           | RE2 - Private Recreation        |
| Investigation Areas by Developers | SP1 - Special Activities        |
| Development Sites 2021-2046       | SP2 - Infrastructure            |
| ForecastID_Centres                | W2 - Recreational Waterways     |
|                                   | DM - Deferred Matter            |



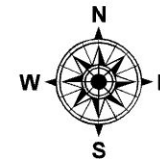
Siva Balasubramanian  
Date: 24/03/2025  
Source: Central Coast Council  
Projection: GDA\_1994\_Transverse\_Mercator; GCS\_GDA\_1994  
Path: \\nke.gosford.nsw.gov.au\water\AM&P\Siva\DSP-2024\Sewer Catchment KSTP

**DISCLAIMER**  
These maps have been compiled from various sources and the publisher and/or contributors accept no responsibility for any injury, loss or damage arising from the use, error or any omission therein. While all care is taken to ensure a high degree of accuracy, users are invited to notify Councils Geospatial Group of any map discrepancies. No part of this map may be reproduced without prior written permission.  
© 2024 Department of Planning, Housing and Infrastructure & © 2025 Central Coast Council, All Rights Reserved.

DSP MAPS 2024



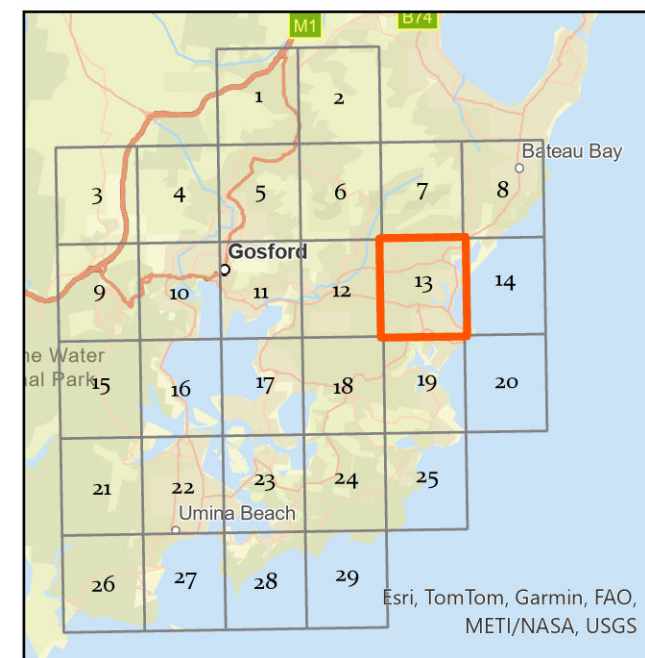




# CENTRAL COAST COUNCIL PROPOSED SEWER ASSETS DSP 2024 SEWERAGE WINNIE BAY

## Legend

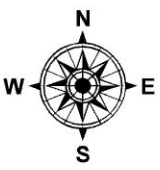
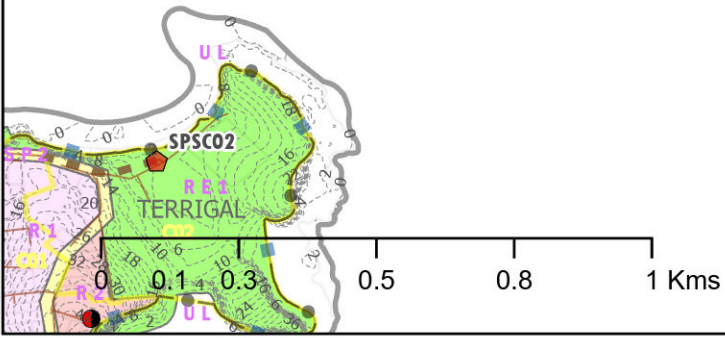
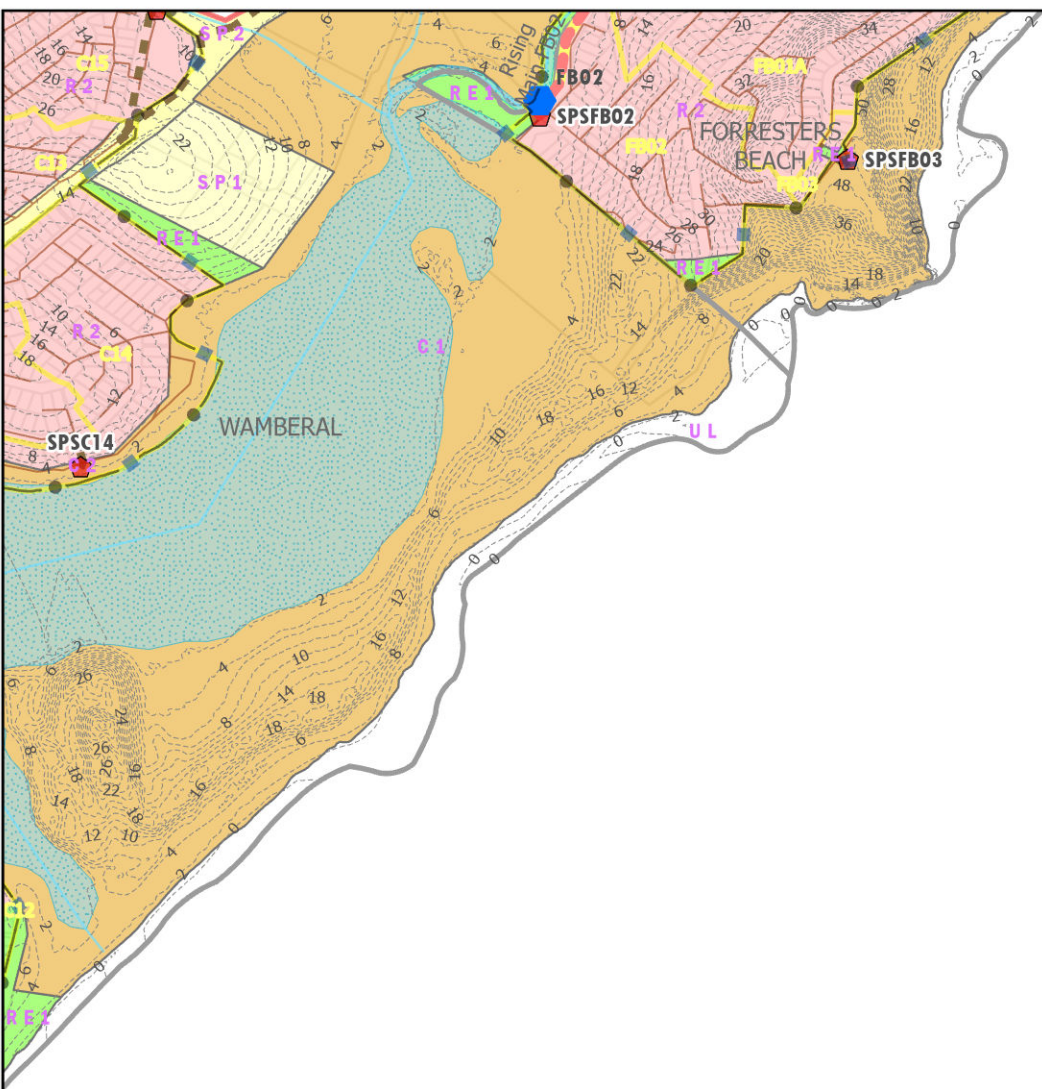
- Winnie Bay EPL Boundary
- SPS Upgrade
- Private Pump Station
- SPS
- STP
- Proposed Sewer Mains 225mm
- Proposed Sewer Mains  $\geq 300$ mm
- New Sewer\_Rising\_Mains
- Sewer Gravity Mains
- Rising Main
- Sewer Catchment Boundaries
- Suburbs
- M1 Motorway
- Railway
- Investigation Areas by Developers
- Development Sites 2021-2046
- ForecastID\_Centres
- Contours 2m
- Natural Drainage Layers
- Water Bodies
- LEP\_2022\_LandZoningMap
  - B1 - Neighbourhood Centre
  - B2 - Local Centre
  - C1 - National Parks & Nature Reserves
  - C2 - Environmental Conservation
  - C3 - Environmental Management
  - C4 - Environmental Living
  - R1 - General Residential
  - R2 - Low Density Residential
  - RE1 - Public Recreation
  - RE2 - Private Recreation
  - SP1 - Special Activities
  - SP2 - Infrastructure
  - W1 - Natural Waterways
  - UL - Unzoned Land
  - DM - Deferred Matter



Siva Balasubramanian  
Date: 24/03/2025  
Source: Central Coast Council  
Projection: GDA\_1994\_Transverse\_Mercator; GCS\_GDA\_1994

**DISCLAIMER**  
These maps have been compiled from various sources and the publisher and/or contributors accept no responsibility for any injury, loss or damage arising from the use, error or any omission therein. While all care is taken to ensure a high degree of accuracy, users are invited to notify Councils Geospatial Group of any map discrepancies. No part of this map may be reproduced without prior written permission.  
© 2024 Department of Planning, Housing and Infrastructure & © 2025 Central Coast Council, All Rights Reserved.

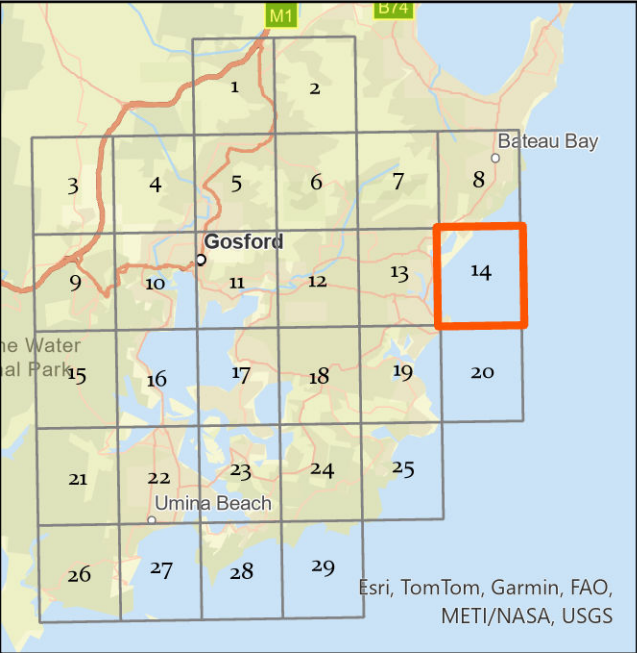




**CENTRAL COAST COUNCIL**  
**PROPOSED SEWER ASSETS DSP 2024**  
**SEWERAGE WINNIE BAY**

**Legend**

- |                                   |                                      |
|-----------------------------------|--------------------------------------|
| Winnie Bay EPL Boundary           | Development Sites 2021-2046          |
| SPS Upgrade                       | ForecastID_Centres                   |
| Private Pump Station              | Contours 2m                          |
| SPS                               | Natural Drainage Layers              |
| STP                               | Water Bodies                         |
| Proposed Sewer Mains 225mm        | LEP_2022_LandZoningMap               |
| Proposed Sewer Mains >=300mm      | C1 - National Parks& Nature Reserves |
| New Sewer_Rising_Mains            | C2 - Environmental Conservation      |
| Sewer Gravity Mains               | R1 - General Residential             |
| Rising Main                       | R2 - Low Density Residential         |
| Sewer Catchment Boundaries        | RE1 - Public Recreation              |
| Suburbs                           | SP1 - Special Activities             |
| M1 Motorway                       | SP2 - Infrastructure                 |
| Railway                           | UL - Unzoned Land                    |
| Investigation Areas by Developers | DM - Deferred Matter                 |

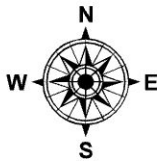


Siva Balasubramanian  
Date: 24/03/2025  
Source: Central Coast Council  
Projection: GDA\_1994\_Transverse\_Mercator; GCS\_GDA\_1994  
Path: \\nke.gosford.nsw.gov.au\water\AM&P\Siva\DSP-2024\Sewer Catchment KSTP

**DISCLAIMER**  
These maps have been compiled from various sources and the publisher and/or contributors accept no responsibility for any injury, loss or damage arising from the use, error or any omission therein. While all care is taken to ensure a high degree of accuracy, users are invited to notify Councils Geospatial Group of any map discrepancies. No part of this map may be reproduced without prior written permission.  
© 2024 Department of Planning, Housing and Infrastructure & © 2025 Central Coast Council, All Rights Reserved.

DSP MAPS 2024

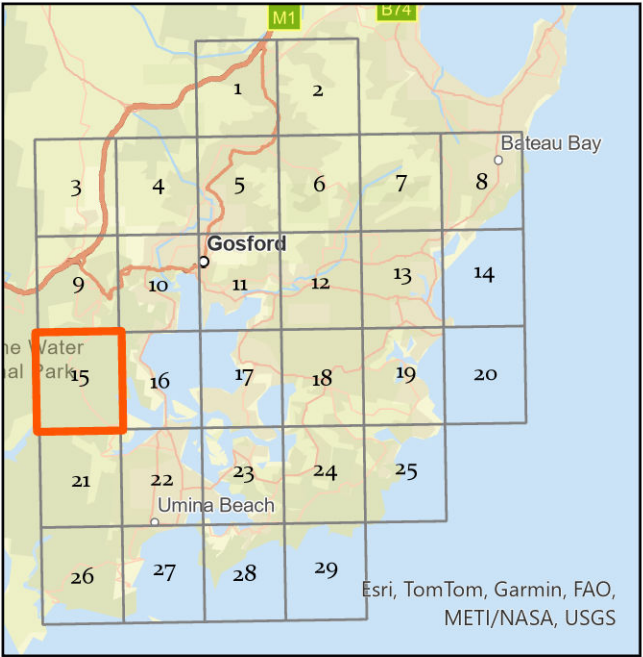




**CENTRAL COAST COUNCIL**  
**PROPOSED SEWER ASSETS DSP 2024**  
**SEWERAGE WINNIE BAY**

**Legend**

- |                                |  |
|--------------------------------|--|
| ● Winnie Bay EPL Boundary      | ▨ Investigation Areas by Developers    |
| ● SPS Upgrade                  | ▨ Development Sites 2021-2046          |
| ● Private Pump Station         | ▨ ForecastID_Centres                   |
| ● SPS                          | --- Contours 2m                        |
| ● STP                          | — Natural Drainage Layers              |
| ■ Proposed Sewer Mains 225mm   | ■ Water Bodies                         |
| ■ Proposed Sewer Mains >=300mm | LEP_2022_LandZoningMap                 |
| ■ New Sewer_Rising_Mains       | ■ C1 - National Parks& Nature Reserves |
| ■ Sewer Gravity Mains          | ■ C2 - Environmental Conservation      |
| ■ Rising Main                  | ■ R2 - Low Density Residential         |
| ■ Sewer Catchment Boundaries   | ■ RE1 - Public Recreation              |
| ■ Suburbs                      | ■ SP2 - Infrastructure                 |
| ■ M1 Motorway                  | ■ W2 - Recreational Waterways          |
| ■ Railway                      | ■ DM - Deferred Matter                 |



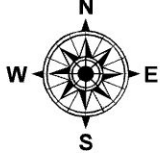
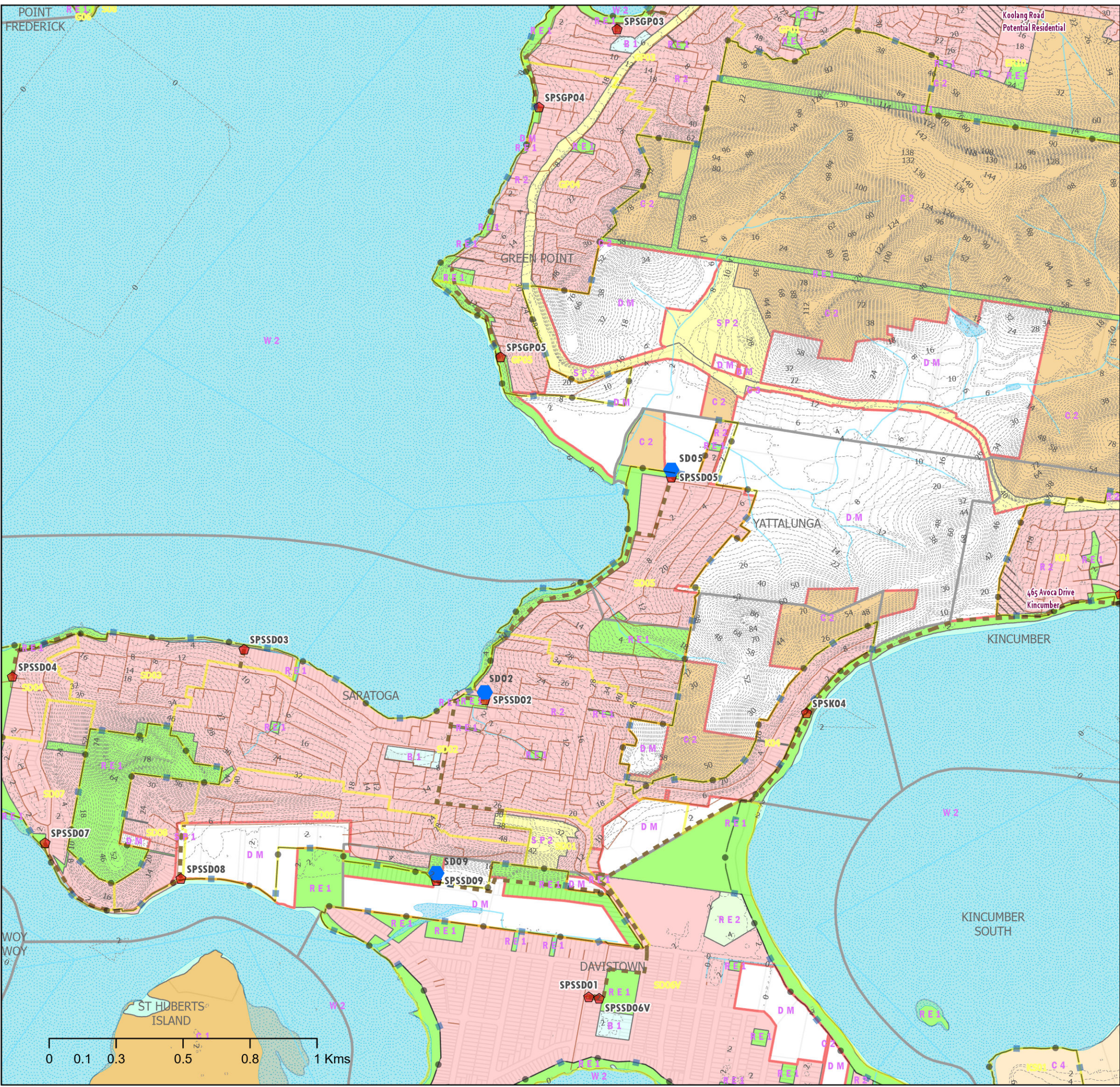
Siva Balasubramanian  
Date: 24/03/2025  
Source: Central Coast Council  
Projection: GDA\_1994\_Transverse\_Mercator; GCS\_GDA\_1994  
Path: \\nke.gosford.nsw.gov.au\water\AM&P\Siva\DSP-2024\Sewer Catchment KSTP

**DISCLAIMER**  
These maps have been compiled from various sources and the publisher and/or contributors accept no responsibility for any injury, loss or damage arising from the use, error or any omission therein. While all care is taken to ensure a high degree of accuracy, users are invited to notify Councils Geospatial Group of any map discrepancies. No part of this map may be reproduced without prior written permission.  
© 2024 Department of Planning, Housing and Infrastructure & © 2025 Central Coast Council, All Rights Reserved.









**CENTRAL COAST COUNCIL**  
**PROPOSED SEWER ASSETS DSP 2024**  
**SEWERAGE WINNIE BAY**

**Legend**

- Winnie Bay EPL Boundary

SPS Upgrade

Private Pump Station

SPS

STP

Proposed Sewer Mains 225mm

Proposed Sewer Mains >=300mm

New Sewer\_Rising\_Mains

Sewer Gravity Mains

Rising Main

Sewer Catchment Boundaries

Suburbs

M1 Motorway

Railway

Investigation Areas by Developers

Development Sites 2021-2046
- ForecastID\_Centres

Contours 2m

Natural Drainage Layers

Water Bodies

LEP\_2022\_LandZoningMap

B1 - Neighbourhood Centre

C1 - National Parks& Nature Reserves

C2 - Environmental Conservation

C3 - Environmental Management

C4 - Environmental Living

R2 - Low Density Residential

RE1 - Public Recreation

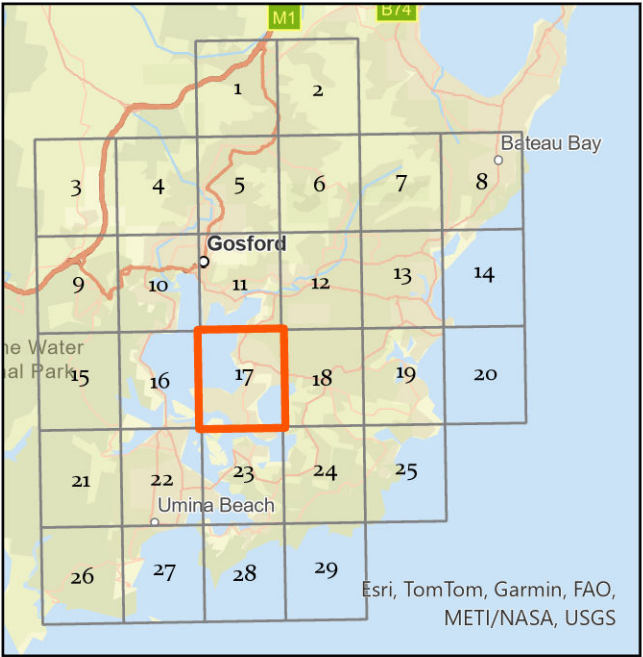
RE2 - Private Recreation

SP1 - Special Activities

SP2 - Infrastructure

W2 - Recreational Waterways

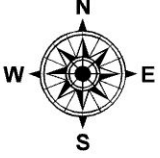
DM - Deferred Matter



Siva Balasubramanian  
Date: 24/03/2025  
Source: Central Coast Council  
Projection: GDA\_1994\_Transverse\_Mercator; GCS\_GDA\_1994  
Path: \\nike.gosford.nsw.gov.au\water\AM&P\Siva\DSP-2024\Sewer Catchment KSTP

**DISCLAIMER**  
These maps have been compiled from various sources and the publisher and/or contributors accept no responsibility for any injury, loss or damage arising from the use, error or any omission therein. While all care is taken to ensure a high degree of accuracy, users are invited to notify Councils Geospatial Group of any map discrepancies. No part of this map may be reproduced without prior written permission.  
© 2024 Department of Planning, Housing and Infrastructure & © 2025 Central Coast Council, All Rights Reserved.

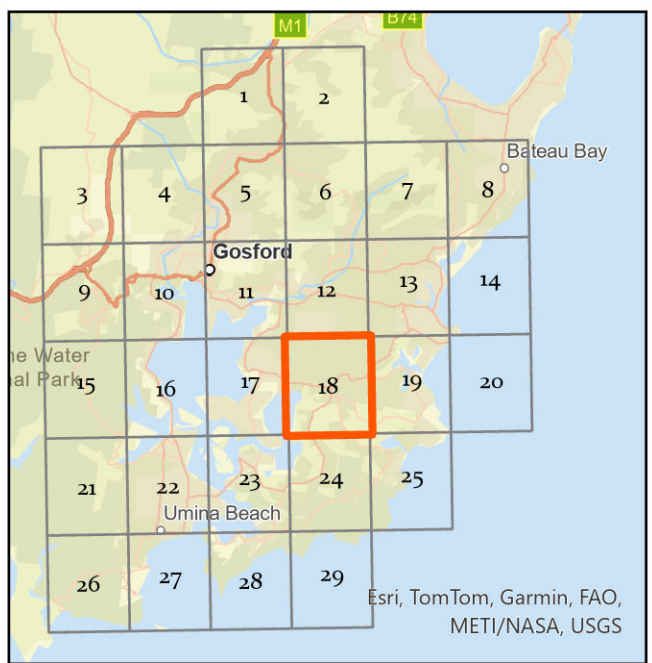




CENTRAL COAST COUNCIL  
PROPOSED SEWER ASSETS DSP 2024  
SEWERAGE WINNIE BAY

Legend

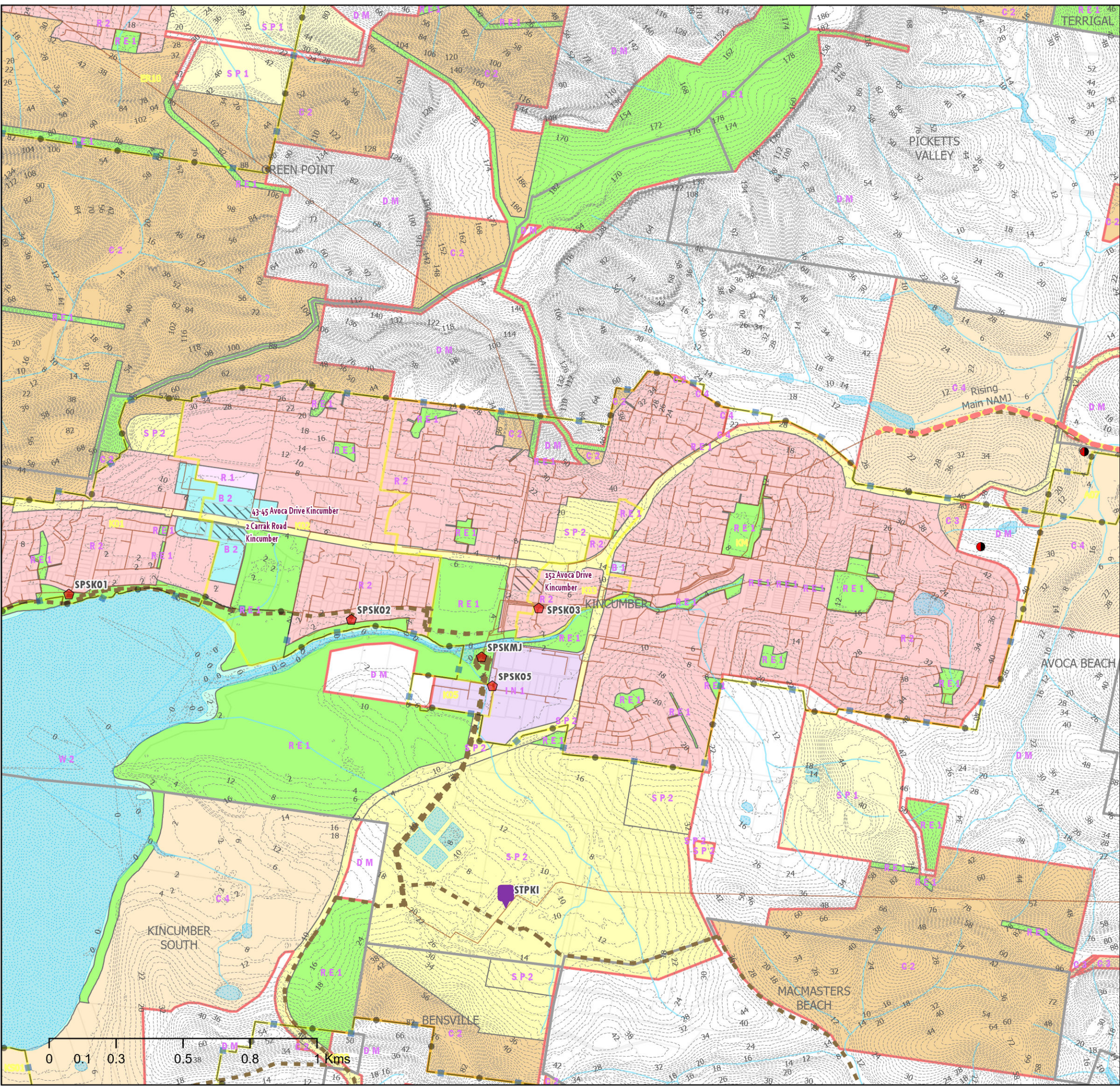
- |                                   |                                 |
|-----------------------------------|---------------------------------|
| Winnie Bay EPL Boundary           | Contours 2m                     |
| SPS Upgrade                       | Natural Drainage Layers         |
| Private Pump Station              | Water Bodies                    |
| SPS                               | LEP_2022_LandZoningMap          |
| STP                               | B1 - Neighbourhood Centre       |
| Proposed Sewer Mains 225mm        | B2 - Local Centre               |
| Proposed Sewer Mains >=300mm      | C2 - Environmental Conservation |
| New Sewer_Rising_Mains            | C3 - Environmental Management   |
| Sewer Gravity Mains               | C4 - Environmental Living       |
| Rising Main                       | IN1 - General Industrial        |
| Sewer Catchment Boundaries        | R1 - General Residential        |
| Suburbs                           | R2 - Low Density Residential    |
| M1 Motorway                       | RE1 - Public Recreation         |
| Railway                           | SP1 - Special Activities        |
| Investigation Areas by Developers | SP2 - Infrastructure            |
| Development Sites 2021-2046       | W2 - Recreational Waterways     |
| ForecastID_Centres                | DM - Deferred Matter            |



Siva Balasubramanian  
Date: 24/03/2025  
Source: Central Coast Council  
Projection: GDA\_1994\_Transverse\_Mercator; GCS\_GDA\_1994  
Path: \\nls.gosford.nsw.gov.au\water\AM&P\Siva\DSP-2024\Sewer Catchment KSTP

**DISCLAIMER**  
These maps have been compiled from various sources and the publisher and/or contributors accept no responsibility for any injury, loss or damage arising from the use, error or any omission therein. While all care is taken to ensure a high degree of accuracy, users are invited to notify Councils Geospatial Group of any map discrepancies. No part of this map may be reproduced without prior written permission.  
© 2024 Department of Planning, Housing and Infrastructure & © 2025 Central Coast Council, All Rights Reserved.

DSP MAPS 2024







CENTRAL COAST COUNCIL  
PROPOSED SEWER ASSETS DSP 2024  
SEWERAGE WINNIE BAY

Legend

- Winnie Bay EPL Boundary

SPS Upgrade

Private Pump Station

SPS

STP

Proposed Sewer Mains 225mm

Proposed Sewer Mains >=300mm

New Sewer\_Rising\_Mains

Sewer Gravity Mains

Rising Main

Sewer Catchment Boundaries

Suburbs

M1 Motorway

Railway

Investigation Areas by Developers

Development Sites 2021-2046
- ForecastID\_Centres

Contours 2m

Natural Drainage Layers

Water Bodies

LEP\_2022\_LandZoningMap

B1 - Neighbourhood Centre

B2 - Local Centre

C2 - Environmental Conservation

C3 - Environmental Management

C4 - Environmental Living

R1 - General Residential

R2 - Low Density Residential

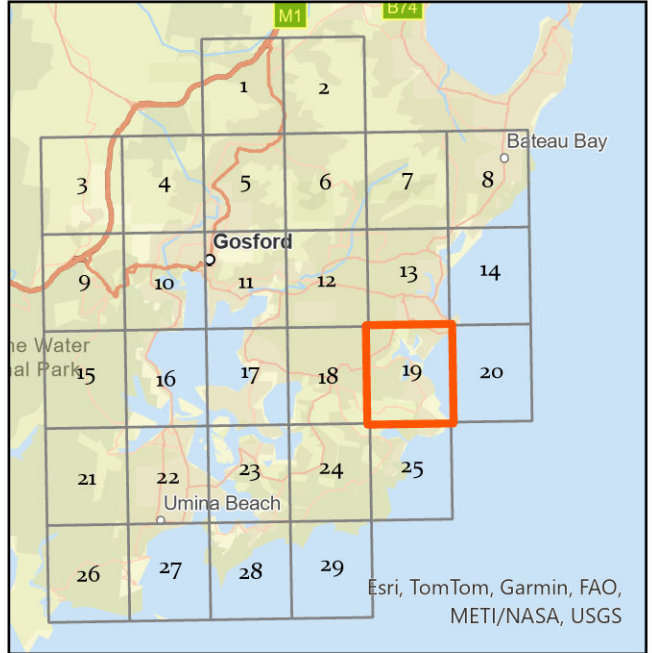
RE1 - Public Recreation

SP2 - Infrastructure

W1 - Natural Waterways

UL - Unzoned Land

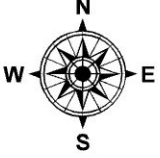
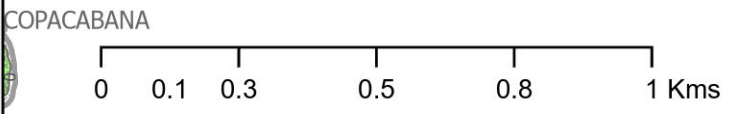
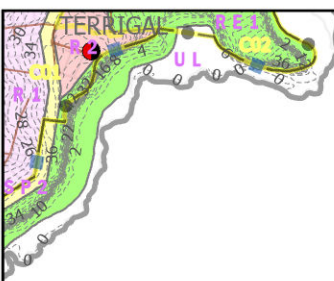
DM - Deferred Matter



Siva Balasubramanian  
Date: 24/03/2025  
Source: Central Coast Council  
Projection: GDA\_1994\_Transverse\_Mercator; GCS\_GDA\_1994  
Path: \\nike.gosford.nsw.gov.au\water\AM&P\Siva\DSP-2024\Sewer Catchment KSTP

**DISCLAIMER**  
These maps have been compiled from various sources and the publisher and/or contributors accept no responsibility for any injury, loss or damage arising from the use, error or any omission therein. While all care is taken to ensure a high degree of accuracy, users are invited to notify Councils Geospatial Group of any map discrepancies. No part of this map may be reproduced without prior written permission.  
© 2024 Department of Planning, Housing and Infrastructure & © 2025 Central Coast Council, All Rights Reserved.

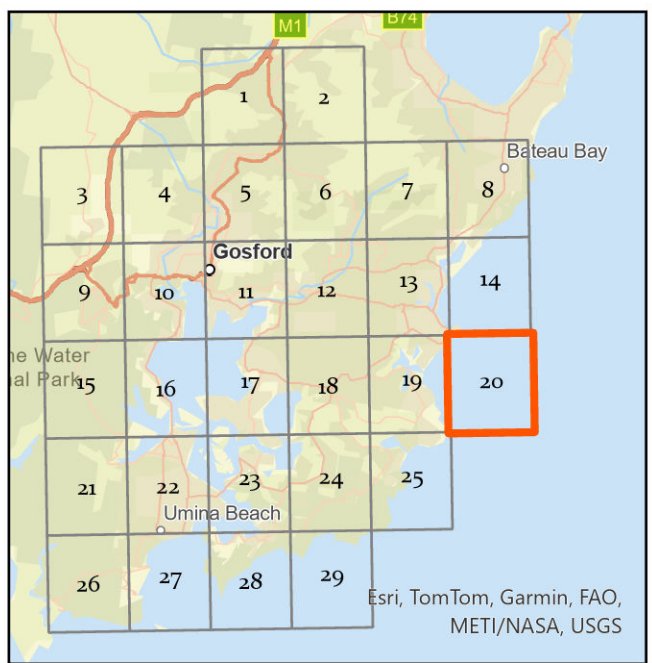




**CENTRAL COAST COUNCIL**  
**PROPOSED SEWER ASSETS DSP 2024**  
**SEWERAGE WINNIE BAY**

**Legend**

- |                              |                                   |
|------------------------------|-----------------------------------|
| Winnie Bay EPL Boundary      | Railway                           |
| SPS Upgrade                  | Investigation Areas by Developers |
| Private Pump Station         | Development Sites 2021-2046       |
| SPS                          | ForecastID_Centres                |
| STP                          | Contours 2m                       |
| Proposed Sewer Mains 225mm   | Natural Drainage Layers           |
| Proposed Sewer Mains >=300mm | Water Bodies                      |
| New Sewer_Rising_Mains       | LEP_2022_LandZoningMap            |
| Sewer Gravity Mains          | R1 - General Residential          |
| Rising Main                  | R2 - Low Density Residential      |
| Sewer Catchment Boundaries   | RE1 - Public Recreation           |
| Suburbs                      | SP2 - Infrastructure              |
| M1 Motorway                  | UL - Unzoned Land                 |

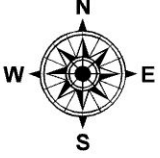


Siva Balasubramanian  
Date: 24/03/2025  
Source: Central Coast Council  
Projection: GDA\_1994\_Transverse\_Mercator; GCS\_GDA\_1994  
Path: \\nke.gosford.nsw.gov.au\water\AM&P\Siva\DSP-2024\Sewer Catchment KSTP

**DISCLAIMER**  
These maps have been compiled from various sources and the publisher and/or contributors accept no responsibility for any injury, loss or damage arising from the use, error or any omission therein. While all care is taken to ensure a high degree of accuracy, users are invited to notify Councils Geospatial Group of any map discrepancies. No part of this map may be reproduced without prior written permission.  
© 2024 Department of Planning, Housing and Infrastructure & © 2025 Central Coast Council, All Rights Reserved.

DSP MAPS 2024

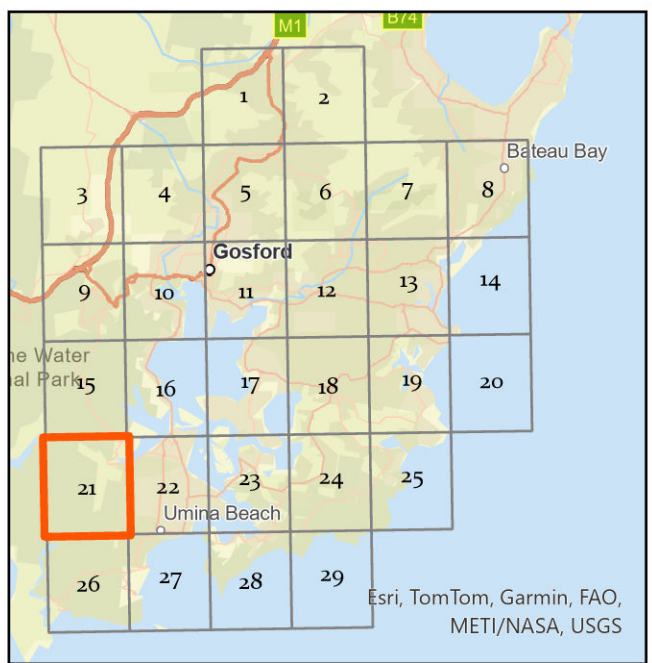




CENTRAL COAST COUNCIL  
PROPOSED SEWER ASSETS DSP 2024  
SEWERAGE WINNIE BAY

Legend

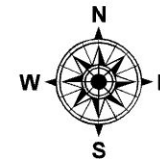
- Winnie Bay EPL Boundary
- SPS Upgrade
- Private Pump Station
- SPS
- STP
- Proposed Sewer Mains 225mm
- Proposed Sewer Mains >=300mm
- New Sewer\_Rising\_Mains
- Sewer Gravity Mains
- Rising Main
- Sewer Catchment Boundaries
- Suburbs
- M1 Motorway
- Railway
- Investigation Areas by Developers
- Development Sites 2021-2046
- ForecastID\_Centres
- Contours 2m
- Natural Drainage Layers
- Water Bodies
- LEP\_2022\_LandZoningMap
  - C1 - National Parks& Nature Reserves
  - C2 - Environmental Conservation
  - IN1 - General Industrial
  - R1 - General Residential
  - R2 - Low Density Residential
  - RE1 - Public Recreation
  - SP1 - Special Activities
  - SP2 - Infrastructure
  - W1 - Natural Waterways
  - W2 - Recreational Waterways
  - DM - Deferred Matter



Siva Balasubramanian  
Date: 24/03/2025  
Source: Central Coast Council  
Projection: GDA\_1994\_Transverse\_Mercator; GCS\_GDA\_1994

**DISCLAIMER**  
These maps have been compiled from various sources and the publisher and/or contributors accept no responsibility for any injury, loss or damage arising from the use, error or any omission therein. While all care is taken to ensure a high degree of accuracy, users are invited to notify Councils Geospatial Group of any map discrepancies. No part of this map may be reproduced without prior written permission.  
© 2024 Department of Planning, Housing and Infrastructure & © 2025 Central Coast Council, All Rights Reserved.

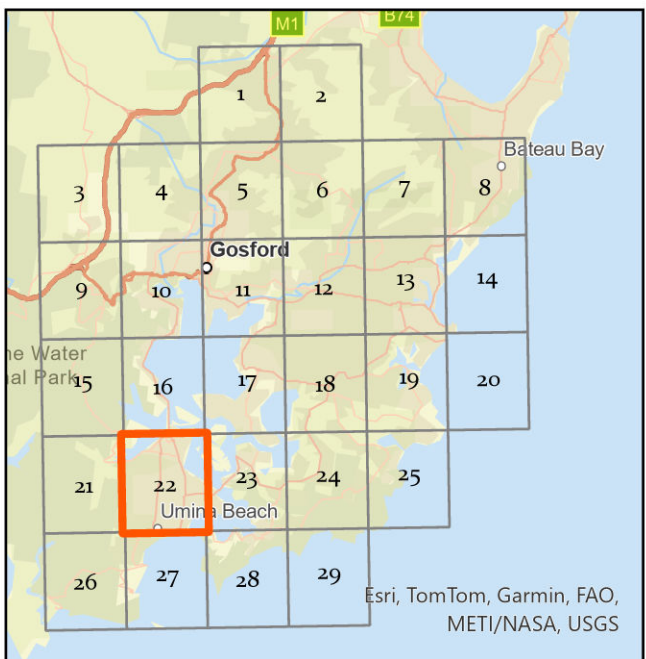




# CENTRAL COAST COUNCIL PROPOSED SEWER ASSETS DSP 2024 SEWERAGE WINNIE BAY

## Legend

- Winnie Bay EPL Boundary
- SPS Upgrade
- Private Pump Station
- SPS
- STP
- Proposed Sewer Mains 225mm
- Proposed Sewer Mains >=300mm
- New Sewer\_Rising\_Mains
- Sewer Gravity Mains
- Rising Main
- Sewer Catchment Boundaries
- Suburbs
- M1 Motorway
- Railway
- Investigation Areas by Developers
- Development Sites 2021-2046
- ForecastID\_Centres
- Contours 2m
- Natural Drainage Layers
- Water Bodies
- LEP\_2022\_LandZoningMap
- B1 - Neighbourhood Centre
- B2 - Local Centre
- B5 - Business Development
- C1 - National Parks& Nature Reserves
- C2 - Environmental Conservation
- IN1 - General Industrial
- R1 - General Residential
- R2 - Low Density Residential
- RE1 - Public Recreation
- RE2 - Private Recreation
- SP2 - Infrastructure
- W2 - Recreational Waterways
- DM - Deferred Matter



Siva Balasubramanian  
Date: 24/03/2025  
Source: Central Coast Council  
Projection: GDA\_1994\_Transverse\_Mercator; GCS\_GDA\_1994  
Path: \\nkr\goford.nsw.gov.au\water\AM&P\Siva\DSF-2024\Sewer Catchment KSTP

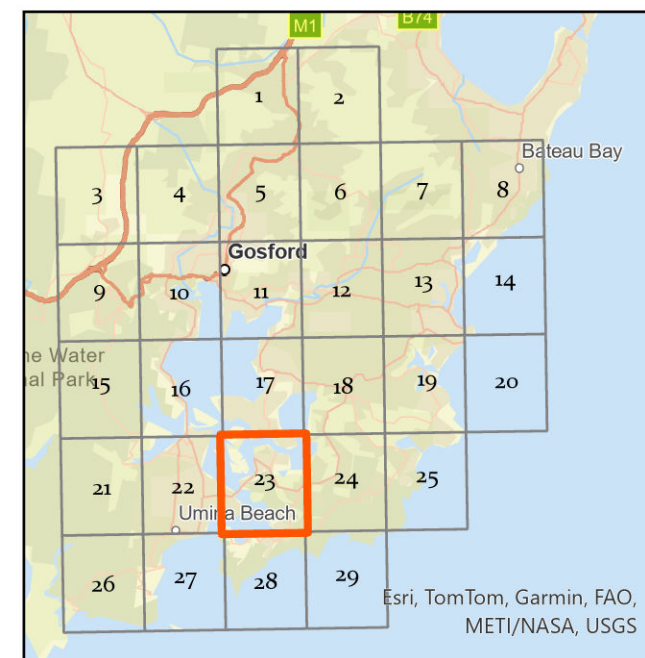
**DISCLAIMER**  
These maps have been compiled from various sources and the publisher and/or contributors accept no responsibility for any injury, loss or damage arising from the use, error or any omission therein. While all care is taken to ensure a high degree of accuracy, users are invited to notify Councils Geospatial Group of any map discrepancies. No part of this map may be reproduced without prior written permission.  
© 2024 Department of Planning, Housing and Infrastructure & © 2025 Central Coast Council, All Rights Reserved.



# CENTRAL COAST COUNCIL PROPOSED SEWER ASSETS DSP 2024 SEWERAGE WINNIE BAY

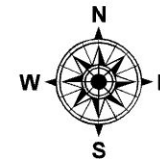
## Legend

- Winnie Bay EPL Boundary
- SPS Upgrade
- Private Pump Station
- SPS
- STP
- Proposed Sewer Mains 225mm
- Proposed Sewer Mains >=300mm
- New Sewer\_Rising\_Mains
- Sewer Gravity Mains
- Rising Main
- Sewer Catchment Boundaries
- Suburbs
- M1 Motorway
- Railway
- Investigation Areas by Developers
- Development Sites 2021-2046
- ForecastID\_Centres
- Contours 2m
- Natural Drainage Layers
- Water Bodies
- LEP\_2022\_LandZoningMap
  - B1 - Neighbourhood Centre
  - B2 - Local Centre
  - C1 - National Parks& Nature Reserves
  - C2 - Environmental Conservation
  - C3 - Environmental Management
  - C4 - Environmental Living
  - R1 - General Residential
  - R2 - Low Density Residential
  - RE1 - Public Recreation
  - SP2 - Infrastructure
  - W1 - Natural Waterways
  - W2 - Recreational Waterways
  - DM - Deferred Matter



Path: \\nike.gosford.nsw.gov.au\water\AM&P\Siwa\DSP-2024\Sewer Catchment KSTP

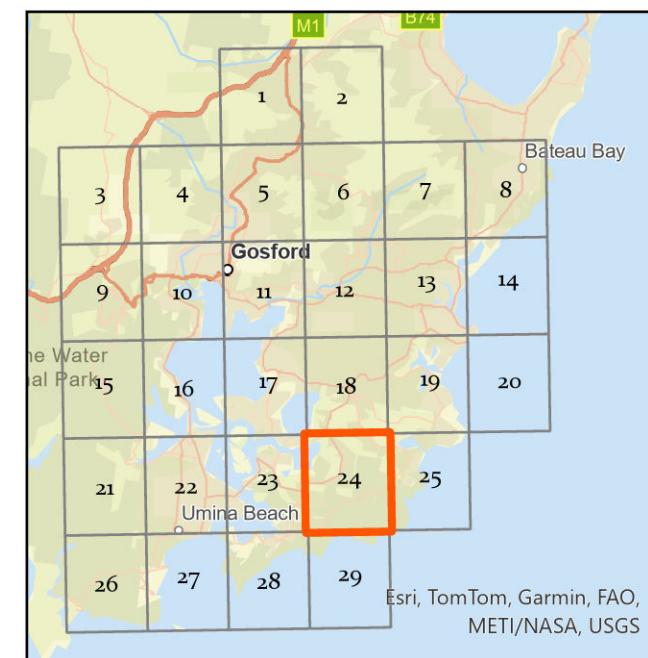




# CENTRAL COAST COUNCIL PROPOSED SEWER ASSETS DSP 2024 SEWERAGE WINNIE BAY

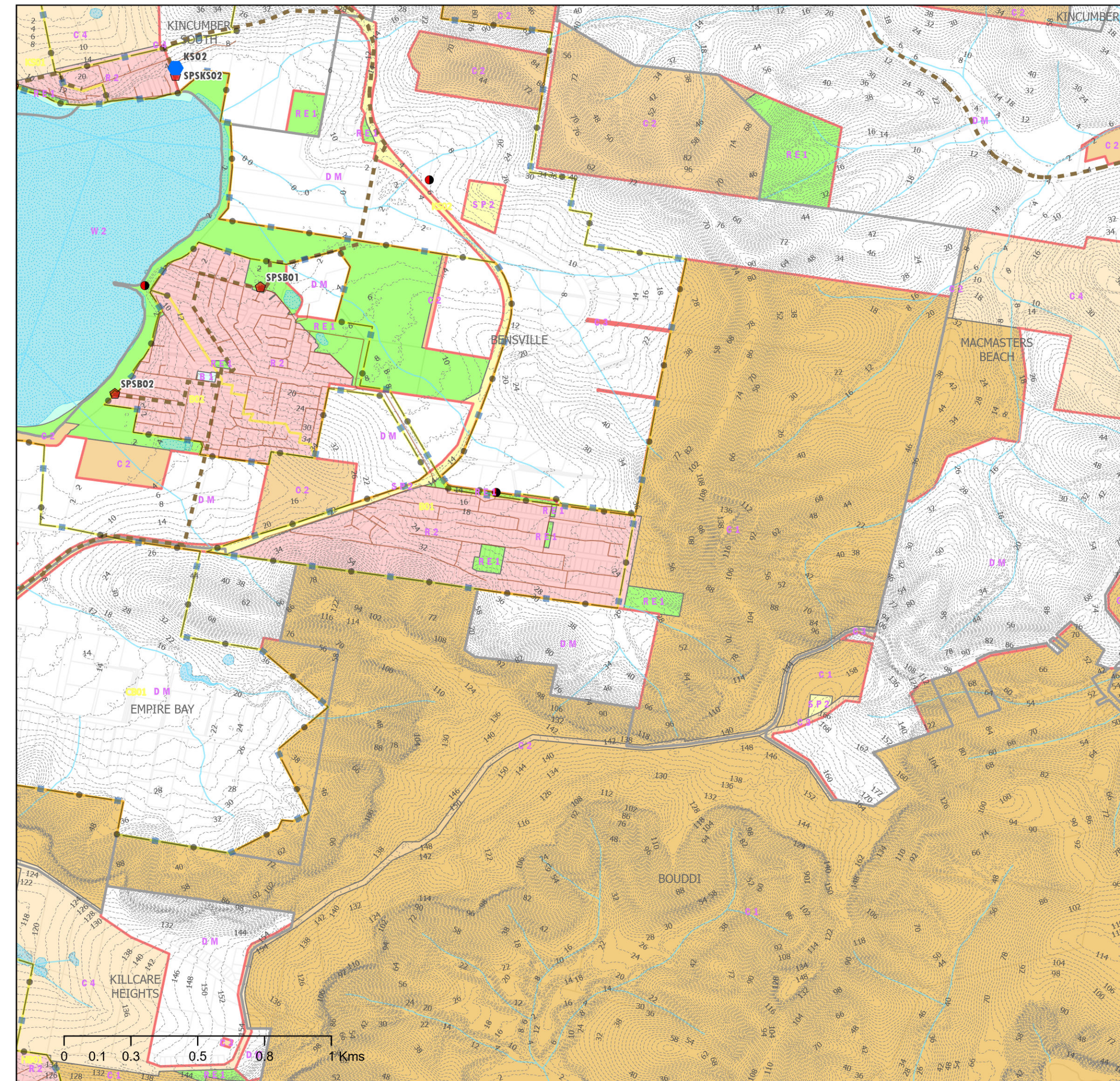
## Legend

- Winnie Bay EPL Boundary
- SPS Upgrade
- Private Pump Station
- SPS
- STP
- Proposed Sewer Mains 225mm
- Proposed Sewer Mains >=300mm
- New Sewer\_Rising\_Mains
- Sewer Gravity Mains
- Rising Main
- Sewer Catchment Boundaries
- Suburbs
- M1 Motorway
- Railway
- Investigation Areas by Developers
- Development Sites 2021-2046
- ForecastID\_Centres
- Contours 2m
- Natural Drainage Layers
- Water Bodies
- LEP\_2022\_LandZoningMap
  - B1 - Neighbourhood Centre
  - C1 - National Parks& Nature Reserves
  - C2 - Environmental Conservation
  - C3 - Environmental Management
  - C4 - Environmental Living
  - R2 - Low Density Residential
  - RE1 - Public Recreation
  - SP2 - Infrastructure
  - W2 - Recreational Waterways
  - DM - Deferred Matter

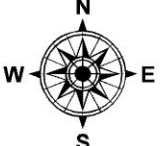


Siva Balasubramanian  
Date: 24/03/2025  
Source: Central Coast Council  
Projection: GDA\_1994\_Transverse\_Mercator; GCS\_GDA\_1994  
Path: \\nike.gosford.nsw.gov.au\water\AM&P\Siva\DSP-2024\Sewer Catchment KSTP

**DISCLAIMER**  
These maps have been compiled from various sources and the publisher and/or contributors accept no responsibility for any injury, loss or damage arising from the use, error or any omission therein. While all care is taken to ensure a high degree of accuracy, users are invited to notify Councils Geospatial Group of any map discrepancies. No part of this map may be reproduced without prior written permission.  
© 2024 Department of Planning, Housing and Infrastructure & © 2025 Central Coast Council, All Rights Reserved.



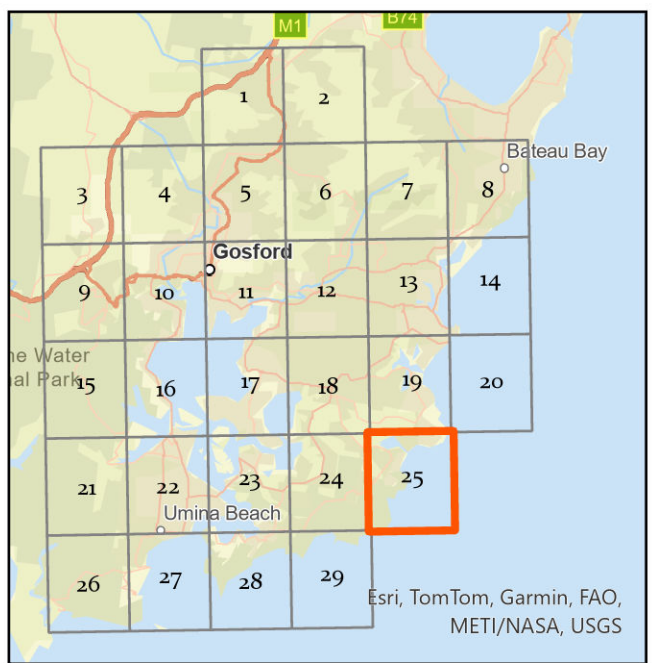




CENTRAL COAST COUNCIL  
PROPOSED SEWER ASSETS DSP 2024  
SEWERAGE WINNIE BAY

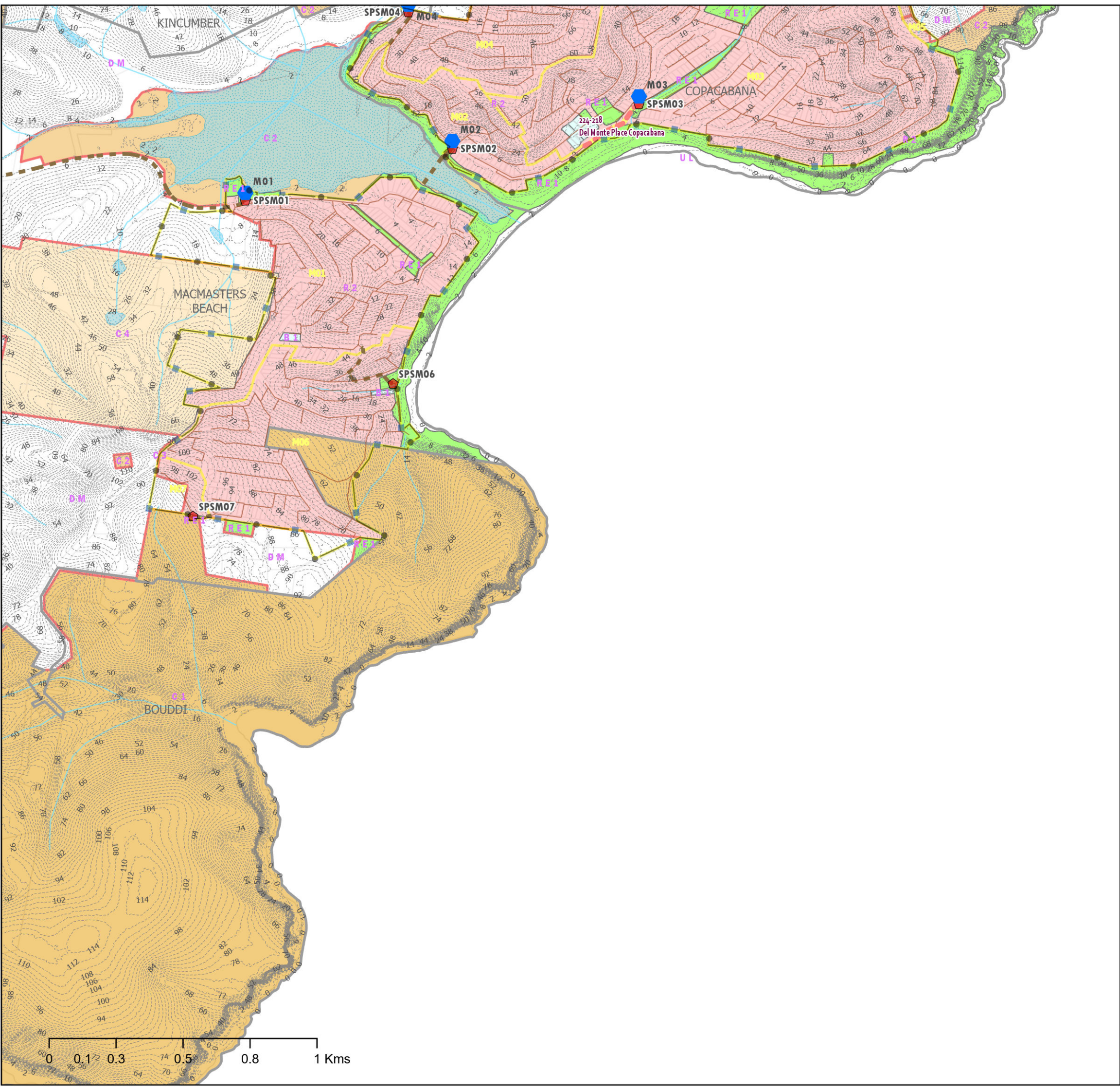
Legend

- |                                       |  |
|---------------------------------------|--|
| ● Winnie Bay EPL Boundary             | ▨ Development Sites 2021-2046            |
| ● SPS Upgrade                         | ▨ ForecastID_Centres                     |
| ● Private Pump Station                | --- Contours 2m                          |
| ● SPS                                 | --- Natural Drainage Layers              |
| ● STP                                 | --- Water Bodies                         |
| --- Proposed Sewer Mains 225mm        | --- LEP_2022_LandZoningMap               |
| --- Proposed Sewer Mains >=300mm      | --- B1 - Neighbourhood Centre            |
| --- New Sewer_Rising_Mains            | --- C1 - National Parks& Nature Reserves |
| --- Sewer Gravity Mains               | --- C2 - Environmental Conservation      |
| --- Rising Main                       | --- C3 - Environmental Management        |
| --- Sewer Catchment Boundaries        | --- C4 - Environmental Living            |
| --- Suburbs                           | --- R2 - Low Density Residential         |
| --- M1 Motorway                       | --- RE1 - Public Recreation              |
| --- Railway                           | --- UL - Unzoned Land                    |
| --- Investigation Areas by Developers | --- DM - Deferred Matter                 |

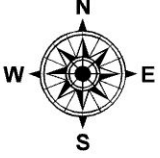


Siva Balasubramanian  
Date: 24/03/2025  
Source: Central Coast Council  
Projection: GDA\_1994\_Transverse\_Mercator; GCS\_GDA\_1994  
Path: \\nike.gosford.nsw.gov.au\water\AM&P\Siva\DSP-2024\Sewer Catchment KSTP

**DISCLAIMER**  
These maps have been compiled from various sources and the publisher and/or contributors accept no responsibility for any injury, loss or damage arising from the use, error or any omission therein. While all care is taken to ensure a high degree of accuracy, users are invited to notify Councils Geospatial Group of any map discrepancies. No part of this map may be reproduced without prior written permission.  
© 2024 Department of Planning, Housing and Infrastructure & © 2025 Central Coast Council, All Rights Reserved.



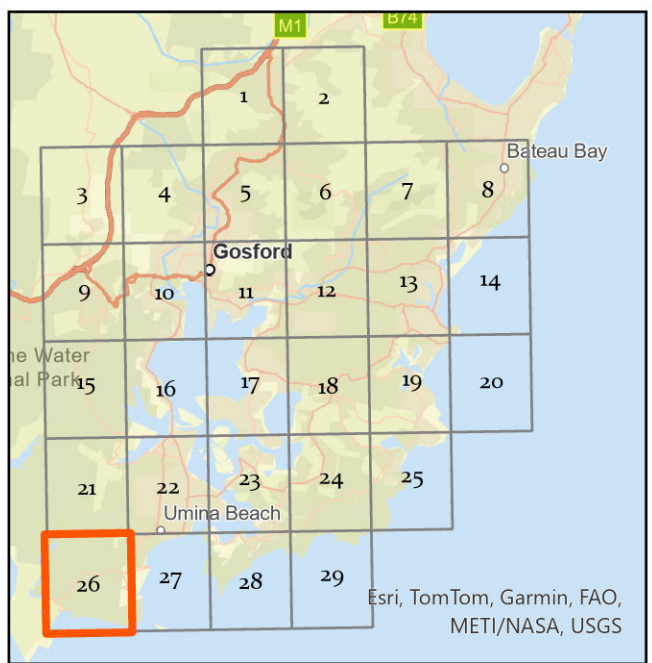




CENTRAL COAST COUNCIL  
PROPOSED SEWER ASSETS DSP 2024  
SEWERAGE WINNIE BAY

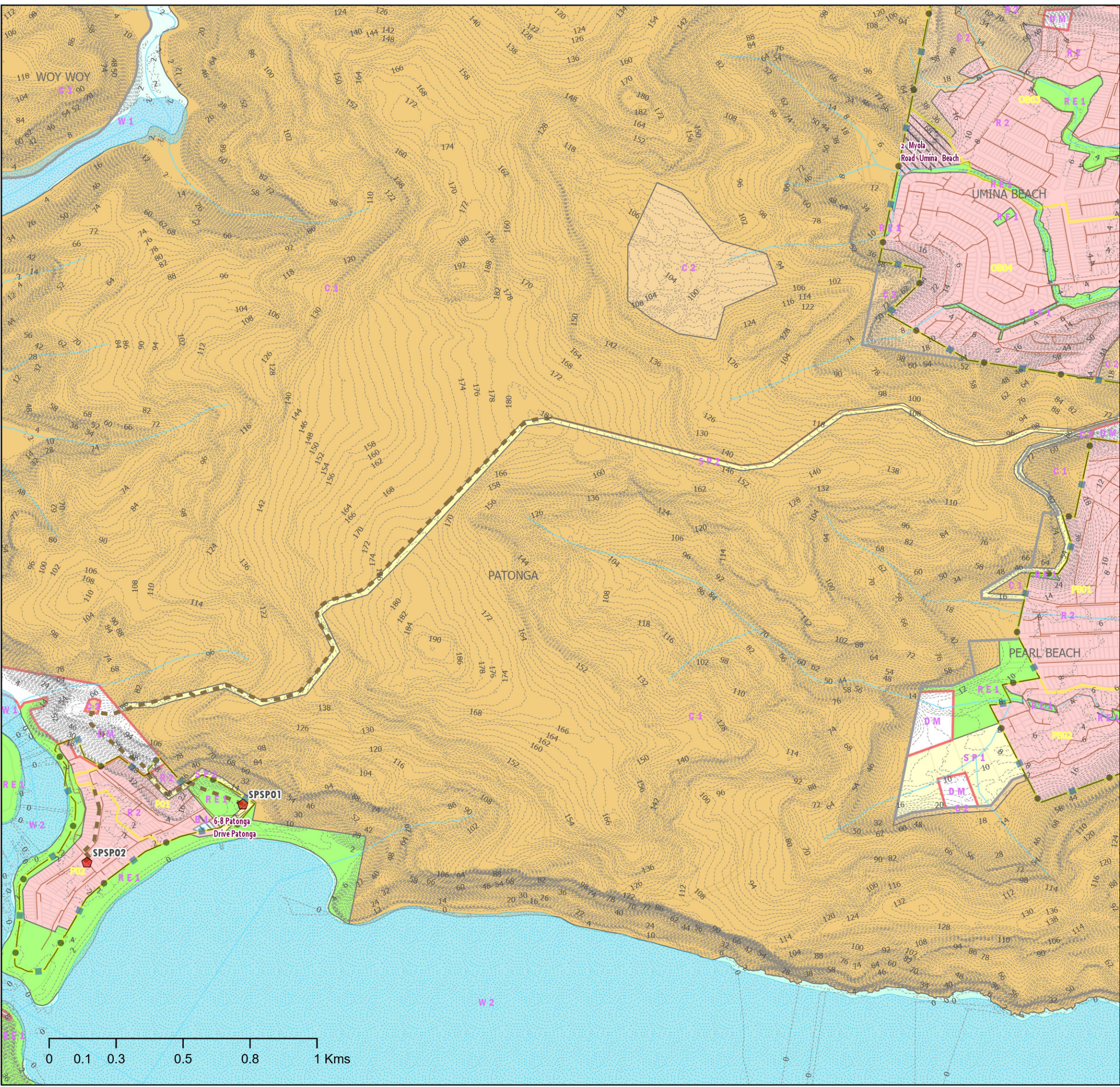
Legend

- Winnie Bay EPL Boundary
- SPS Upgrade
- Private Pump Station
- SPS
- STP
- Proposed Sewer Mains 225mm
- Proposed Sewer Mains >=300mm
- New Sewer\_Rising\_Mains
- Sewer Gravity Mains
- Rising Main
- Sewer Catchment Boundaries
- Suburbs
- M1 Motorway
- Railway
- Investigation Areas by Developers
- Development Sites 2021-2046
- ForecastID\_Centres
- Contours 2m
- Natural Drainage Layers
- Water Bodies
- LEP\_2022\_LandZoningMap
- B1 - Neighbourhood Centre
- C1 - National Parks& Nature Reserves
- C2 - Environmental Conservation
- R2 - Low Density Residential
- RE1 - Public Recreation
- SP1 - Special Activities
- SP2 - Infrastructure
- W1 - Natural Waterways
- W2 - Recreational Waterways
- DM - Deferred Matter

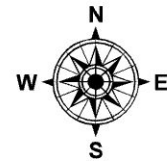


Siva Balasubramanian  
Date: 24/03/2025  
Source: Central Coast Council  
Projection: GDA\_1994\_Transverse\_Mercator; GCS\_GDA\_1994  
Path: \\nike.gosford.nsw.gov.au\water\AM&P\Siva\DSP-2024\Sewer Catchment KSTP

**DISCLAIMER**  
These maps have been compiled from various sources and the publisher and/or contributors accept no responsibility for any injury, loss or damage arising from the use, error or any omission therein. While all care is taken to ensure a high degree of accuracy, users are invited to notify Councils Geospatial Group of any map discrepancies. No part of this map may be reproduced without prior written permission.  
© 2024 Department of Planning, Housing and Infrastructure & © 2025 Central Coast Council, All Rights Reserved.







**CENTRAL COAST COUNCIL**  
**PROPOSED SEWER ASSETS DSP 2024**  
**SEWERAGE WINNIE BAY**

**Legend**

- Winnie Bay EPL Boundary

● SPS Upgrade

● Private Pump Station

● SPS

● STP

■ Proposed Sewer Mains 225mm

■ Proposed Sewer Mains >=300mm

■ New Sewer\_Rising\_Mains

■ Sewer Gravity Mains

■ Rising Main

■ Sewer Catchment Boundaries

■ Suburbs

■ M1 Motorway

■ Railway

■ Investigation Areas by Developers

■ Development Sites 2021-2046
- ForecastID\_Centres

--- Contours 2m

--- Natural Drainage Layers

■ Water Bodies

LEP\_2022\_LandZoningMap

■ B1 - Neighbourhood Centre

■ B2 - Local Centre

■ C1 - National Parks& Nature Reserves

■ C2 - Environmental Conservation

■ R1 - General Residential

■ R2 - Low Density Residential

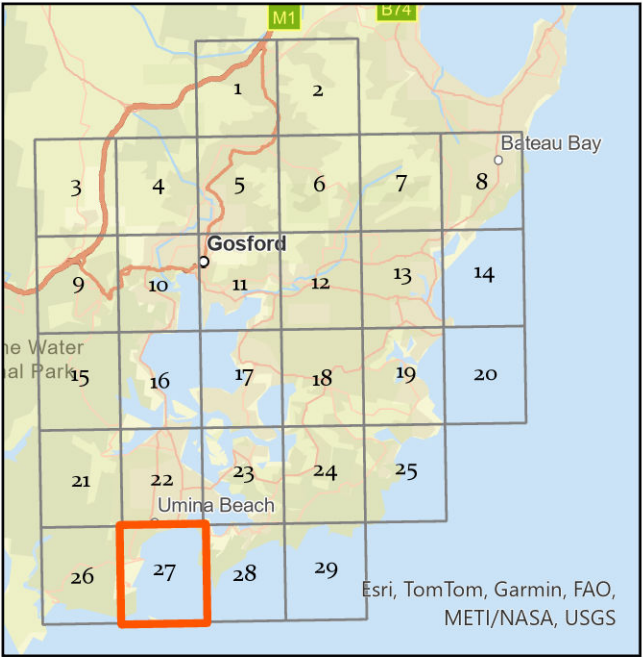
■ RE1 - Public Recreation

■ RE2 - Private Recreation

■ SP2 - Infrastructure

■ W2 - Recreational Waterways

■ DM - Deferred Matter



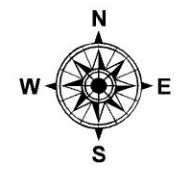
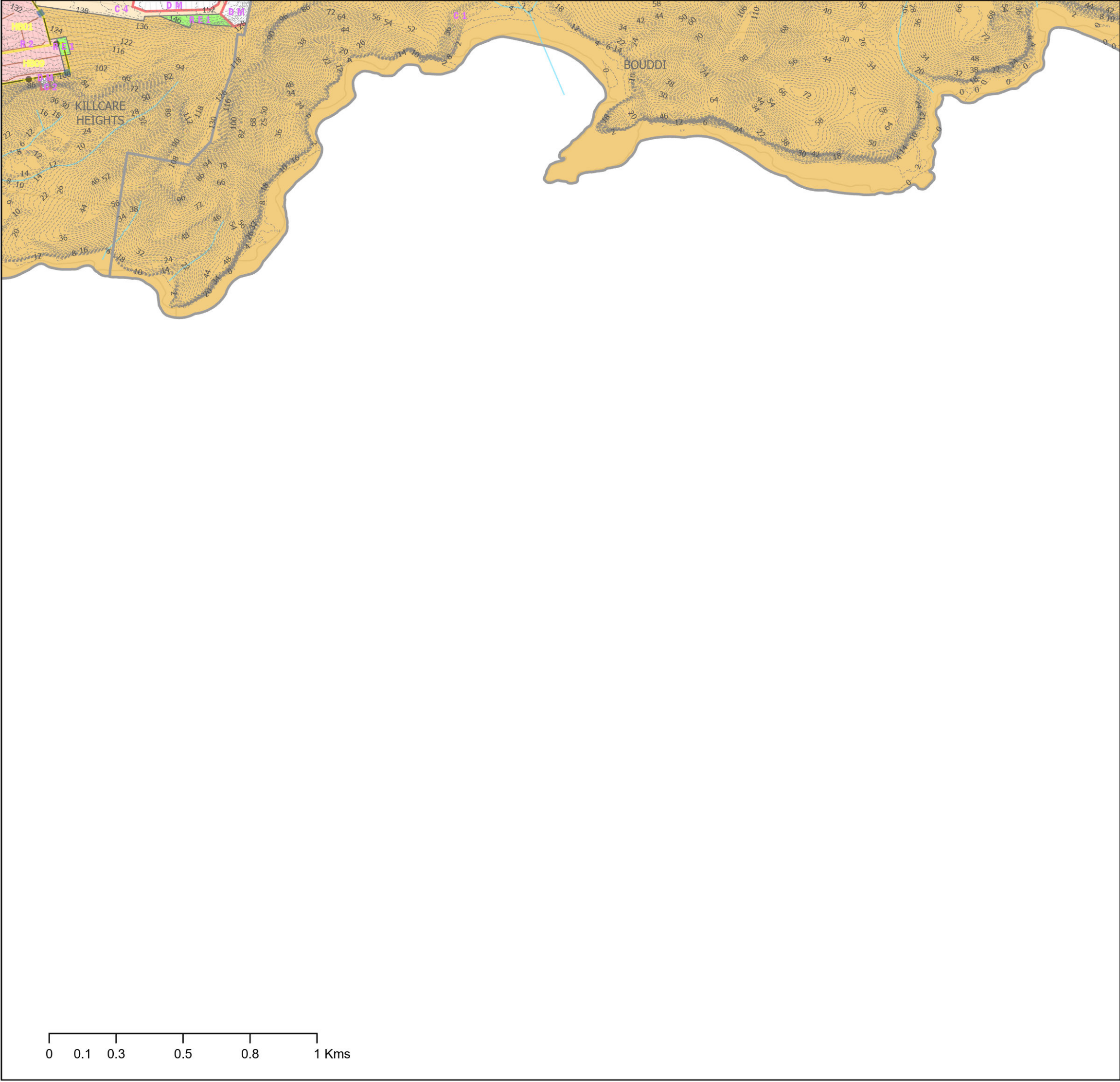
Siva Balasubramanian  
Date: 24/03/2025  
Source: Central Coast Council  
Projection: GDA\_1994\_Transverse\_Mercator; GCS\_GDA\_1994  
Path: \\nke.gosford.nsw.gov.au\water\AM&P\Siva\DSP-2024\Sewer Catchment KSTP

**DISCLAIMER**  
These maps have been compiled from various sources and the publisher and/or contributors accept no responsibility for any injury, loss or damage arising from the use, error or any omission therein. While all care is taken to ensure a high degree of accuracy, users are invited to notify Councils Geospatial Group of any map discrepancies. No part of this map may be reproduced without prior written permission.  
© 2024 Department of Planning, Housing and Infrastructure & © 2025 Central Coast Council, All Rights Reserved.



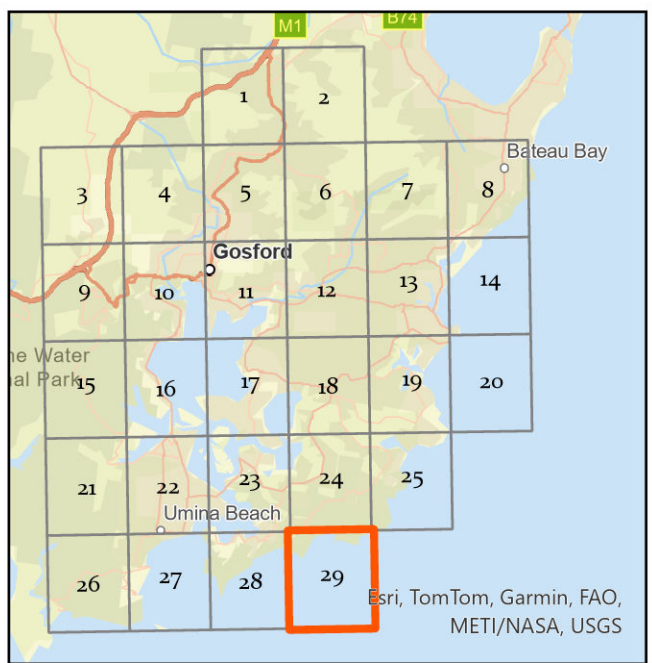






**CENTRAL COAST COUNCIL**  
**PROPOSED SEWER ASSETS DSP 2024**  
**SEWERAGE WINNIE BAY**

- Legend**
- |                              |                                      |
|------------------------------|--------------------------------------|
| Winnie Bay EPL Boundary      | Railway                              |
| SPS Upgrade                  | Investigation Areas by Developers    |
| Private Pump Station         | Development Sites 2021-2046          |
| SPS                          | ForecastID_Centres                   |
| STP                          | Contours 2m                          |
| Proposed Sewer Mains 225mm   | Natural Drainage Layers              |
| Proposed Sewer Mains >=300mm | Water Bodies                         |
| New Sewer_Rising_Mains       | LEP_2022_LandZoningMap               |
| Sewer Gravity Mains          | C1 - National Parks& Nature Reserves |
| Rising Main                  | C2 - Environmental Conservation      |
| Sewer Catchment Boundaries   | C4 - Environmental Living            |
| Suburbs                      | R2 - Low Density Residential         |
| M1 Motorway                  | RE1 - Public Recreation              |
|                              | DM - Deferred Matter                 |



Path: \\nke.gosford.nsw.gov.au\water\AM&P\Siva\DSP-2024\Sewer Catchment KSTP